

HyDraw® V600

What's New

"Power-to-Design" circuits



HyDraw® *"Power-to-Design" circuits*

Index



1	Solenoid Actuation Chart
2	Edit Solenoid Information
3	Fetch Pipe/Tube from library
4	Edit Port Operating Parameters
5	Update Property List
6	Display Dual Port Names



1	Export Parts List - Custom Template
2	Net List - Insert to Drawing
3	Relocate Symbol - Change Reference points
4	External Ports with Through Bolt Holes and O-ring
5	Export to MDTools - Linked CAD data
6	Quick Manifold : Submit Design - Advanced Design Parameters
7	Quick Manifold : Submit Design - Advanced Constraints
8	Symbol Context Menu

Index

HyDraw Library Manager

1	Pipe and Tube Library
2	Component Display Formats
	Connection Display Formats
	External Port Display Formats
3	Component Types - Display Formats
4	Dual Port Name
5	Child Symbol Library
	Child Symbol Library - Import Symbols
6	Search for Symbols in Library Manager
7	Build New Symbol - Building Blocks

1	Edit Master Symbol - Solenoid Information
2	Edit Master Symbol - Display Format
3	Building Blocks in Edit Symbol
4	Model/Design Properties - Assign to Component Type
5	New Component Type - None

Solenoid Actuation Chart

Create Solenoid Actuation Chart and insert into the drawing.

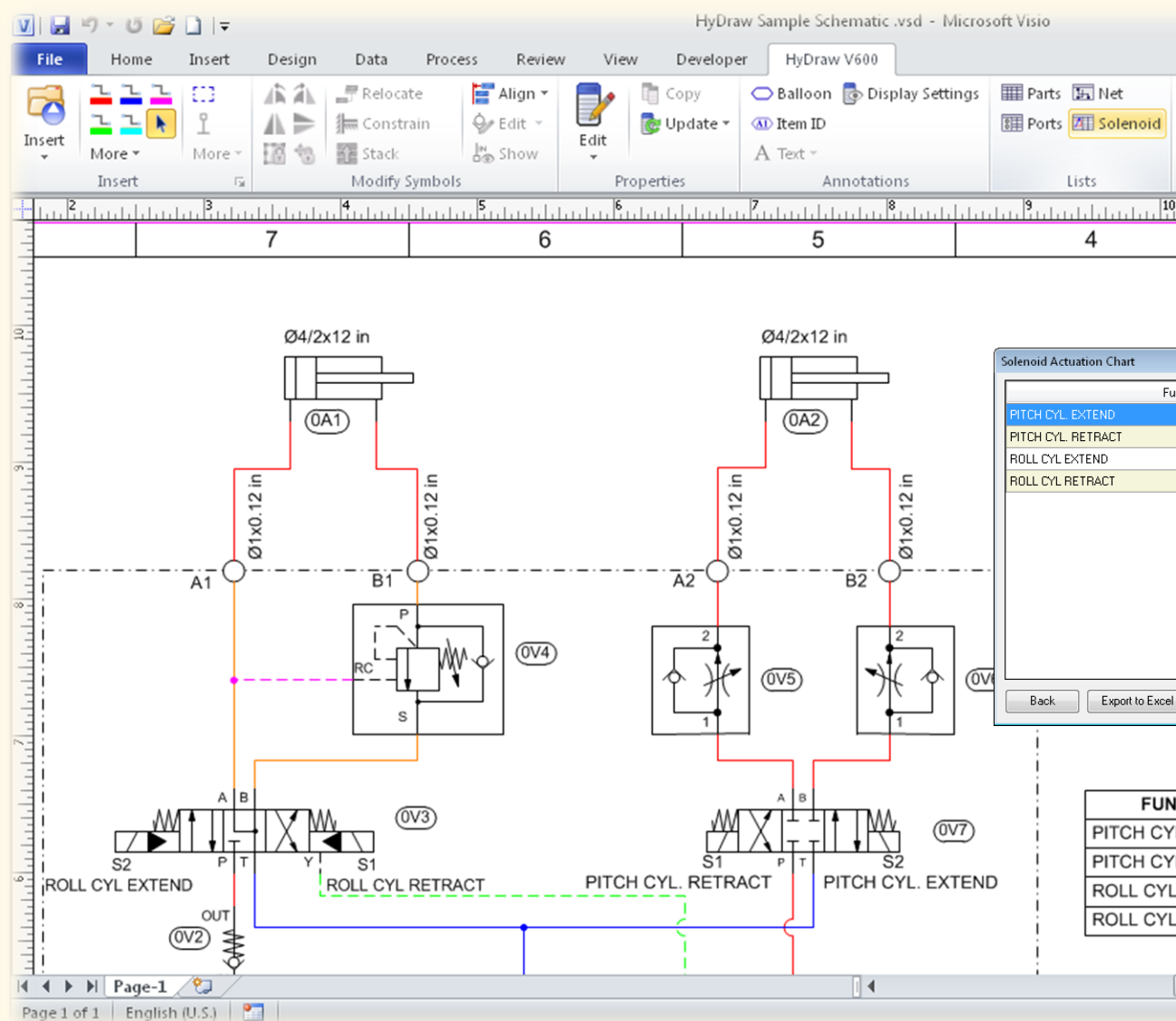
NEW

Solenoid Actuation Chart

Function	0V3-S1	0V3-S2	0V7-S1	0V7-S2
PITCH CYL. EXTEND	<input type="checkbox"/>	<input type="checkbox"/>	<input type="checkbox"/>	<input checked="" type="checkbox"/>
PITCH CYL. RETRACT	<input type="checkbox"/>	<input type="checkbox"/>	<input checked="" type="checkbox"/>	<input type="checkbox"/>
ROLL CYL. EXTEND	<input type="checkbox"/>	<input checked="" type="checkbox"/>	<input type="checkbox"/>	<input type="checkbox"/>
ROLL CYL. RETRACT	<input checked="" type="checkbox"/>	<input type="checkbox"/>	<input type="checkbox"/>	<input type="checkbox"/>

Back Export to Excel Insert to Drawing Cancel

FUNCTION	0V3-S1	0V3-S2	0V7-S1	0V7-S2
PITCH CYL. EXTEND	<input type="radio"/>	<input type="radio"/>	<input type="radio"/>	<input checked="" type="radio"/>
PITCH CYL. RETRACT	<input type="radio"/>	<input type="radio"/>	<input checked="" type="radio"/>	<input type="radio"/>
ROLL CYL. EXTEND	<input type="radio"/>	<input checked="" type="radio"/>	<input type="radio"/>	<input type="radio"/>
ROLL CYL. RETRACT	<input checked="" type="radio"/>	<input type="radio"/>	<input type="radio"/>	<input type="radio"/>

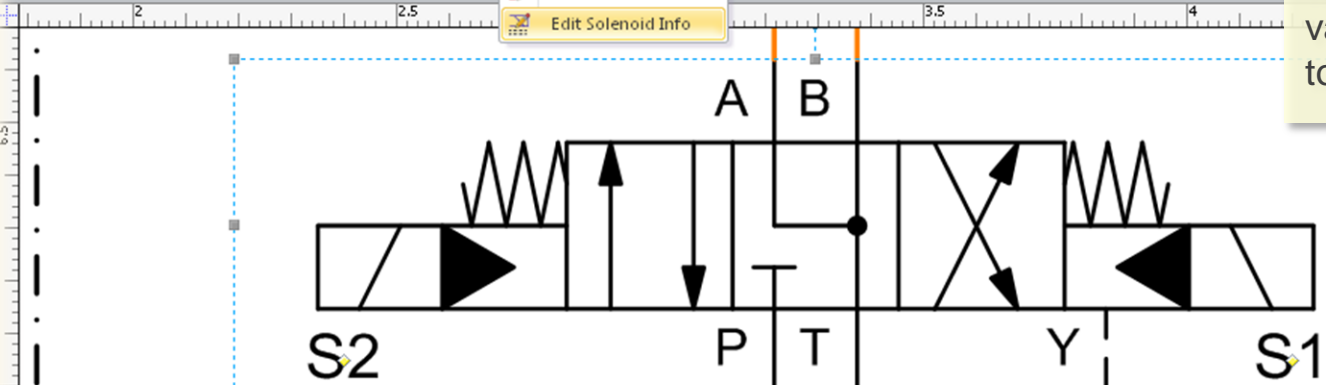


File Home Insert Design Data Process Review View Developer HyDraw V600

Relocate Align Edit Copy Display Settings Parts Net
 Constrain Update Item ID Ports Solenoid
 Stack Modify Symbols Annotations Lists

Symbol Port Edit Solenoid Info

Edit Solenoid Information
 Define solenoid identification and functions for solenoid operated valves and display in the drawing to create an ISO compliant circuit.



0V3



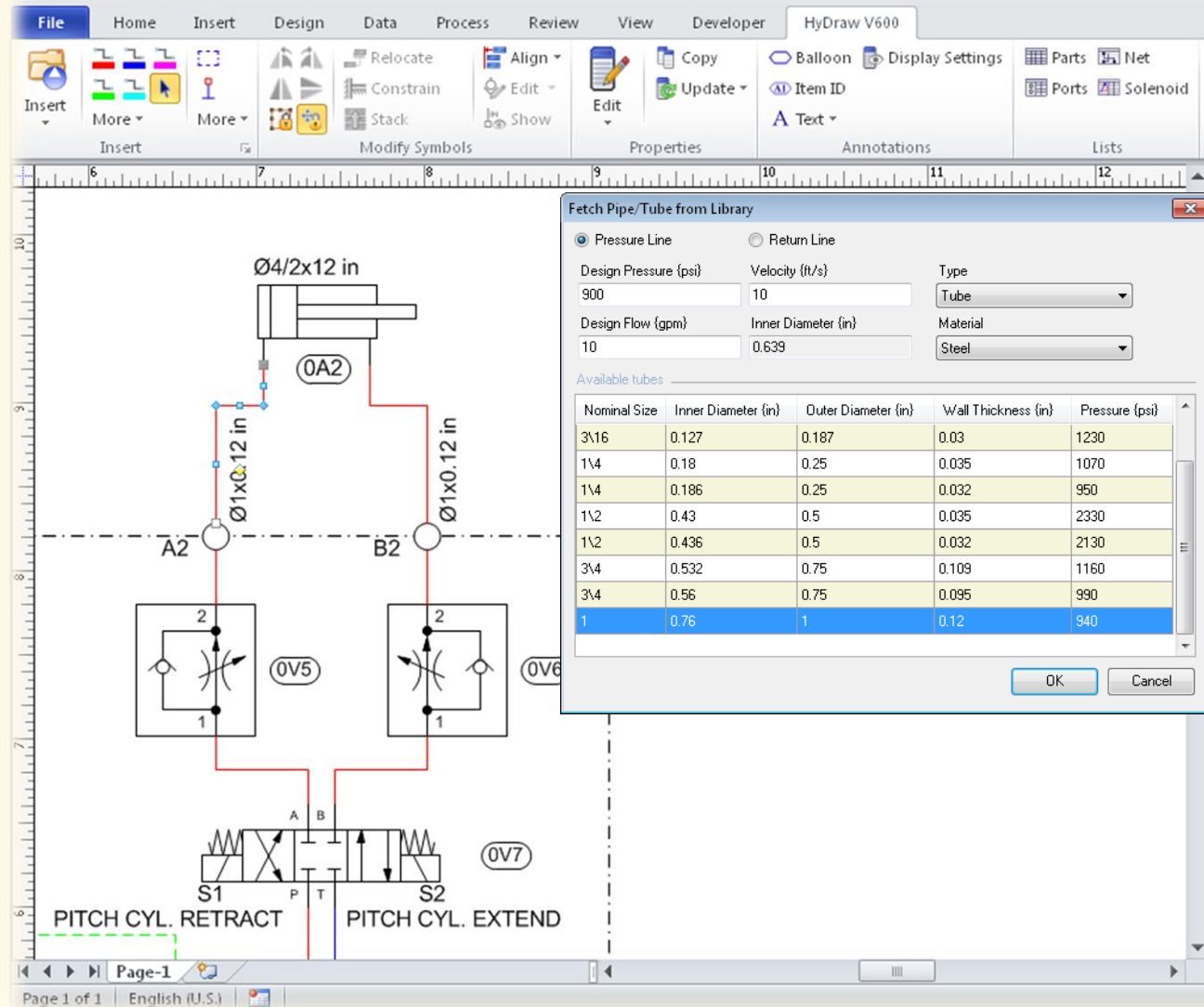
Edit Solenoid Information

Solenoids			Solenoid b is energized during		Available functions
Name	Solenoid ID	Show	Function	Show	
Solenoid b	S1	<input checked="" type="checkbox"/>	ROLL CYL RETRACT	<input checked="" type="checkbox"/>	ROLL CYL RETRACT
Solenoid a	S2	<input checked="" type="checkbox"/>			ROLL CYL EXTEND ROLL CYL RETRACT PITCH CYL. EXTEND PITCH CYL. RETRACT

ROLL CYL RETRACT

OK Cancel





Fetch Pipe/Tube from library

Assign pipe or tube to the connection by selecting a pipe or tube from the library using operating pressure, flow, and velocity.

NEW

Connection Type Pressure

Balloon Style Rounded Rectangle

Display Setting

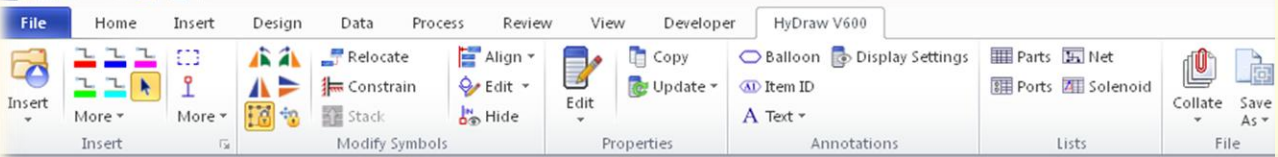
Design requirements

Pressure (psi)	900
Max Flow (gpm)	10

Connection Data

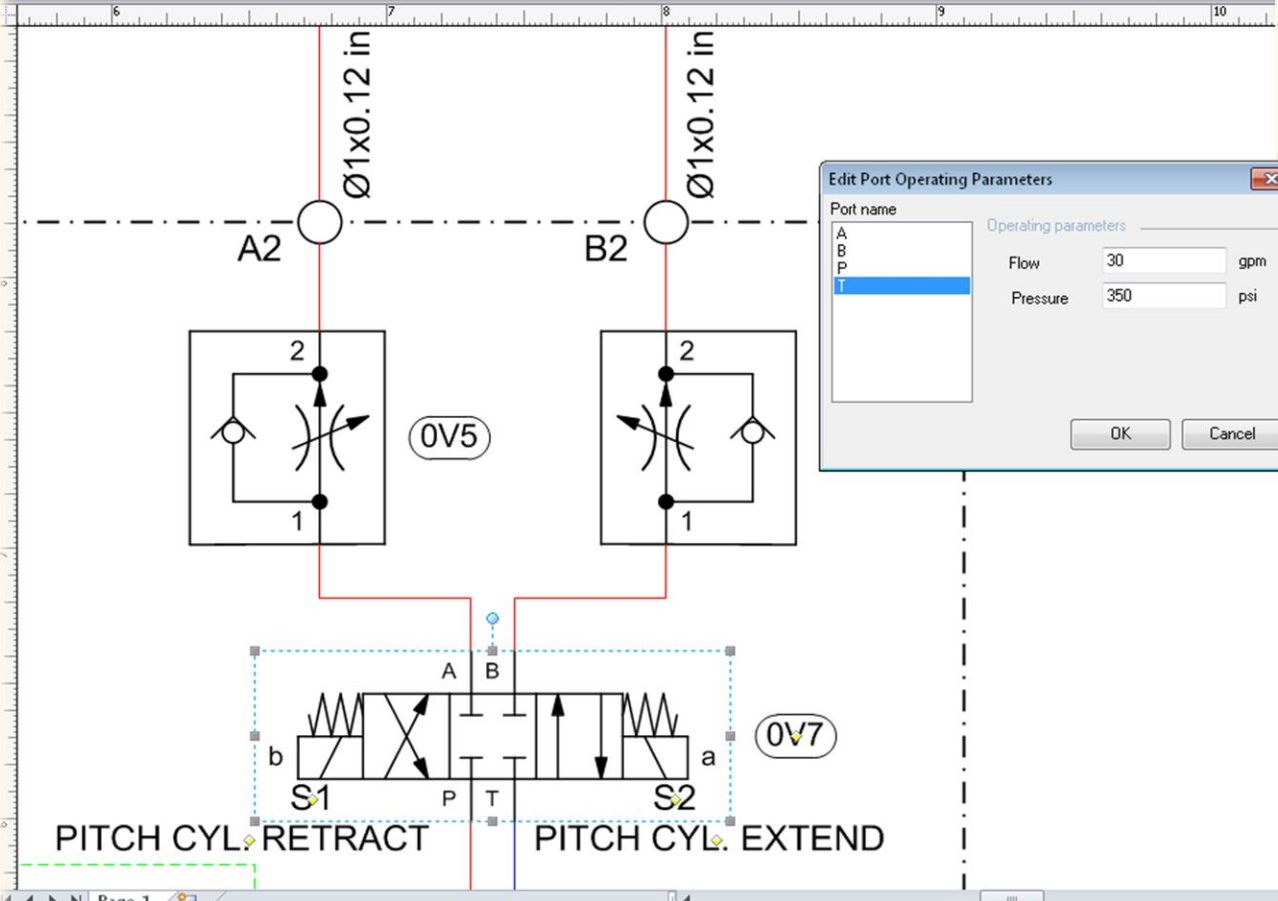
Pressure (psi)	940
Flow to Actuator (gpm)	
Flow to Tank (gpm)	
Type	Tube
Size	
Nominal Size	1
Wall Thickness (in)	0.12

Accessories



Edit Port Operating Parameters

Specify operating flow and pressure for each port of a component for automated flow-optimal manifold design in MDTools & QuickManifolds.com.



Edit Port Operating Parameters

Port name: A, B, P, T

Operating parameters:

Flow: 30 gpm

Pressure: 350 psi

OK Cancel

Design require NEW

Flow (LPM)

Pressure (bar)

Model Data

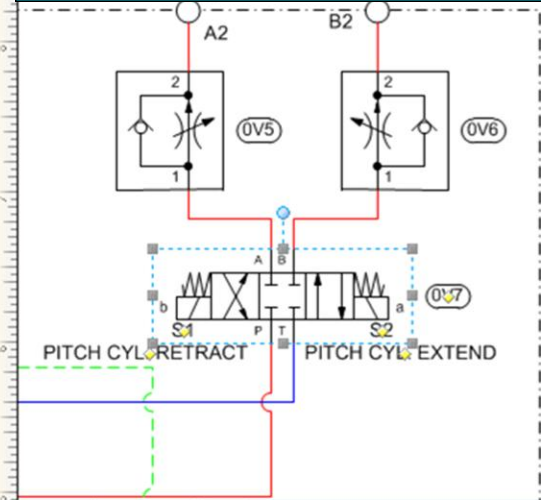
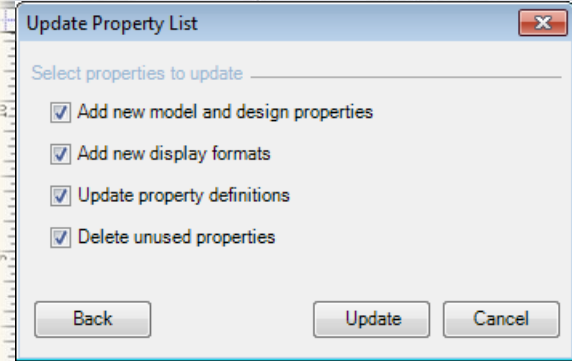
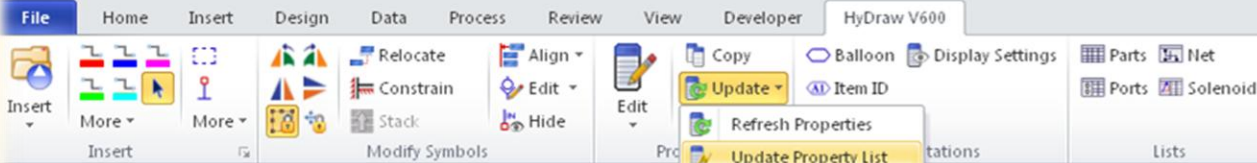
Model Code	4WE10E73-3X/E*N9K4/A12™
Model Family	4WE10E73
Part Number	
Description	Direction Control Valve
Manufacturer	Bosch Rexroth
Cost	
Assembly Cost	
List Price	
Rated Flow (LPM)	7
Pressure Loss @ Rated Flow (b	
Rated Pressure (bar)	350
Cavity/Footprint/Interface	D03
Malfunction Flow (LPM)	
Voltage	
Frequency	
Bolt Shoulder Height (mm)	
Installation Torque (Steel)	11.4 lb.ft./15.5 Nm
Installation Torque (Aluminum)	11.4 lb.ft./15.5 Nm
Catalog Number	RE 23183/04.05
Cracking Pressure (psi)	

Accessories

Linked data

Documents





Model properties

Model Code	
Model Family	
Part Number	
Description	
Manufacturer	
Cost	
Assembly Cost	
List Price	
Rated Flow	
Pressure Loss @ Rated Flow	
Rated Pressure	
Cavity/Footprint/Interface	
Malfunction Flow	
Voltage	
Frequency	
Bolt Shoulder Height	
Installation Torque (Steel)	
Installation Torque (Aluminum)	
Catalog Number	

Update Property List

Update properties of components, external ports, connections, and accessories in the drawing with the changes made in the library.

Design requirements

Flow (LPM)
Pressure (bar)

NEW

Model Data

Model Code	DSG-01-3C2-A100-N150
Model Family	DSG01
Part Number	
Description	Direction Control Valve
Manufacturer	Yuken
Cost	
Assembly Cost	
List Price	
Rated Flow (LPM)	
Pressure Loss @ Rated Flow	
Rated Pressure (bar)	
Cavity/Footprint/Interface	D03
Malfunction Flow (LPM)	
Voltage	110
Frequency	Hz
Bolt Shoulder Height	
Installation Torque (Steel)	
Installation Torque (Aluminum)	
Catalog Number	
SAP Number	

Accessories

Linked data

Display Dual Port Names

Define alternate port names for screw-in cartridge valve symbols. Functional names display in the drawing, while the port numbers are read by the MDTTools software.

NEW

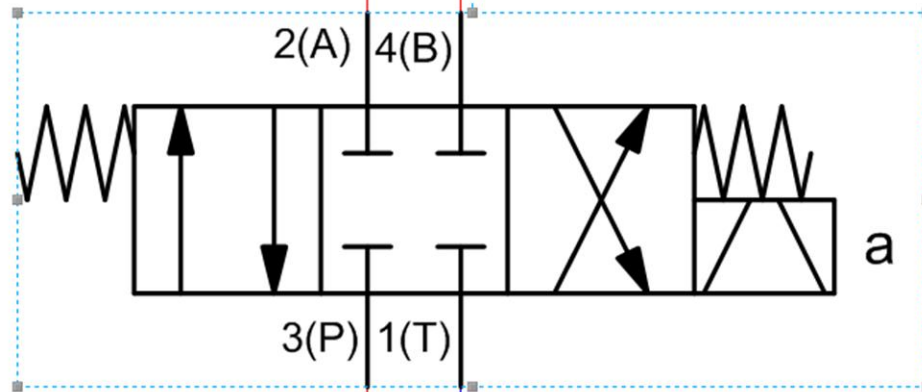
Edit Port

Name	Other Name	
2	A	✖
4	B	✖
3	P	✖
1	T	✖

Display

Name Other Name

OK Cancel



0A3

Export Parts List - Custom Template

Export part list into Excel.
Create parts list in Excel using the user defined template.

ENHANCED

HyDraw Options

Data Path Misc. Internet Settings QuickManifolds

Application Units Balloon Connection External Port **Parts List** Ports List

Formats

Configure columns

Property Name	Display Name	Alignment	Width
ItemID	Item ID	Center	17
Quantity	QTY	Center	12
Model Code	Model Code	Left	40
Description	Description	Left	40
Manufacturer	Manufacturer	Left	32

HyDraw default

Excel template

D:\PartsList.xlsx

Start Column Start Row

Parts List.xls [Compatibility Mode] - Microsoft Excel

E28

VEST, Inc.

3250 W. Big Beaver Rd., Suite 440, Troy, MI 48084 USA
fax. +1 (248) 649-9560 | www.VESTusa.com

Item ID	QTY	Model Code	Description	Manufacturer	Price	Quantity in Stock	Reorder Level	Reorder Time in Days	Quantity in Reorder
0A1	1	6.00JU-2HLRF48A-30.00	Cylinder Hydraulic	Parker					
0A2	1	6.00JU-2HLRF48A-30.00	Cylinder Hydraulic	Parker					
0M1	1	M3715	Electric Motor	Baldor					
0P1	1	PE060R00B6B20PA00N00S1A1U	Pump Variable Single	Parker					
0V1	1	6MV414	Needle Valve	Parker					
0V2	1	SPRE510P15N	Check Valve	Parker					
0V3	1	D81VHW004C1NUJW	Direction Control Valve	Parker					
0V4	1	BRC6MH	Counterbalance Valve	Parker					
0V5	1	FDCB-LAN	Flow Control Valve	Sun					
0V6	1	FDCB-LAN	Flow Control Valve	Sun					
0V7	1	4WE10E73-3X/E*N9K4/A12**	Direction Control Valve	Bosch Rexroth					
0Z1	1	T-300-FV	Reservoir	Vescor					
0Z10	1	BR210	Filler/Breather	Eaton					
0Z2	1	MM1	Envelope	CDC					
0Z3	1	P30-100	Suction Strainer	Flow-ezy					
0Z4	1	G300	Pressure Gauge	Stauff					
0Z5	1	D225M/SAEB	Motor/Pump Adapter	BSF					
0Z6	1	400-M60-BB	Coupling Set	Magnaloy					
0Z7	1	721-20	Hose	Parker					
0Z8	1	50AS1050EBPGG20	Filter	Parker					
0Z9	1	LS167	Float & Temperature Switch	Gems					

Inventory List

Net List - Insert to Drawing

Insert net list into the drawing.

ENHANCED

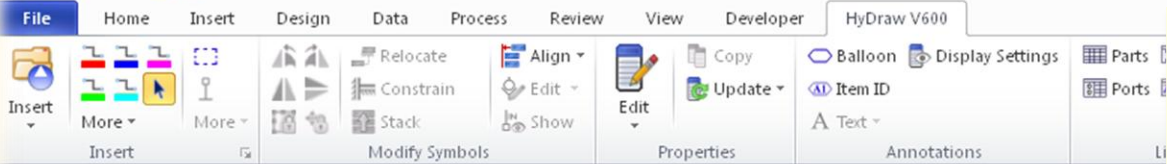
Create Net List

Net Name	Net Items	Status
NET-9	0V2-IN, P, G, 0A3-P	✓
NET-10	0V2-OUT, 0V3-P	✓
NET-6	0V4-P, B1	✓
NET-7	0V4-S, 0V3-B	✓
NET-8	0V4-RC, 0V3-A, A1	✓
NET-5	T, 0V3-T, 0A3-T	✓
NET-11	DR, 0V3-Y	✓
NET-3	A2, 0V5-2	✓
NET-1	B2, 0V6-2	✓
NET-2	0V6-1, 0A3-B	✓
NET-4	0V5-1, 0A3-A	✓

Recreate Clear Error Flags

Export to Excel Insert to Drawing OK Cancel

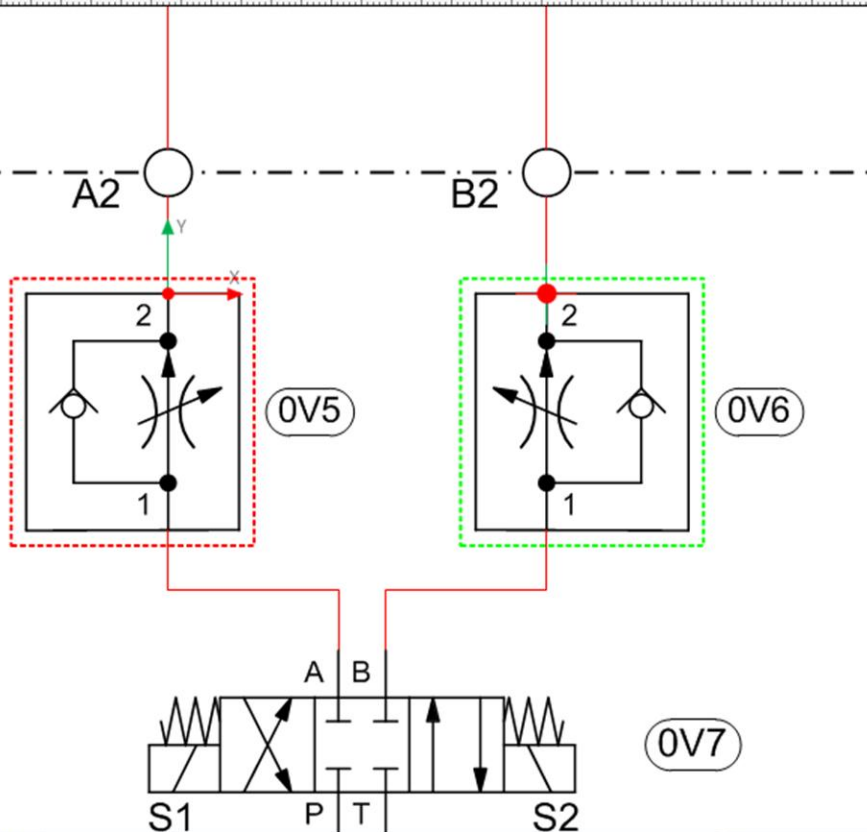
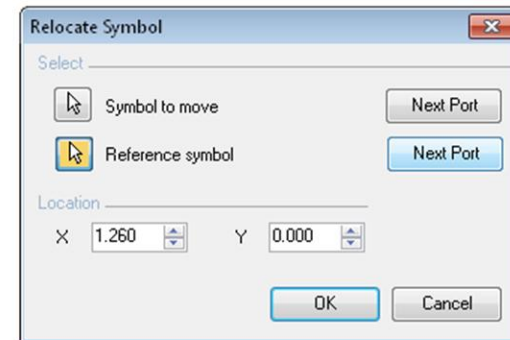
NET NAME	NET ITEMS
NET-9	0V2-IN, P, G, 0A3-P
NET-10	0V2-OUT, 0V3-P
NET-6	0V4-P, B1
NET-7	0V4-S, 0V3-B
NET-8	0V4-RC, 0V3-A, A1
NET-5	T, 0V3-T, 0A3-T
NET-11	DR, 0V3-Y
NET-3	A2, 0V5-2
NET-1	B2, 0V6-2
NET-2	0V6-1, 0A3-B
NET-4	0V5-1, 0A3-A

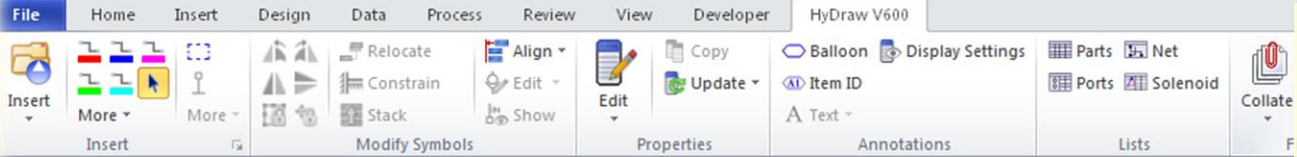


Relocate Symbol - Change Reference points

Relocate symbols by specifying the distance between symbol ports.

ENHANCED





External ports with Through Bolt Holes and O-ring

Define external ports with Through bolt holes and O-ring.



Symbol

Item ID	EXT
Balloon Style	No
Display Setting	No

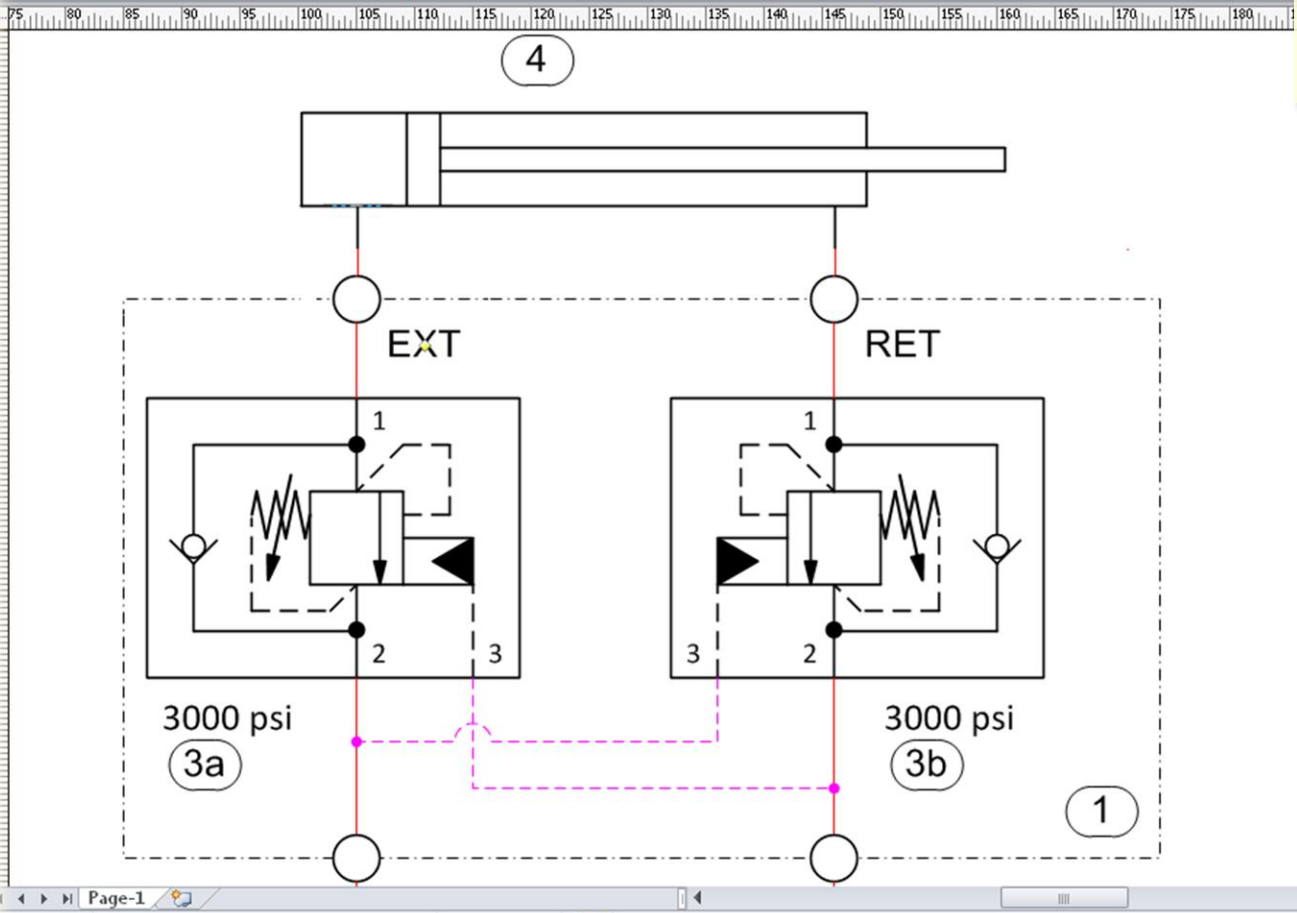
Design requirements

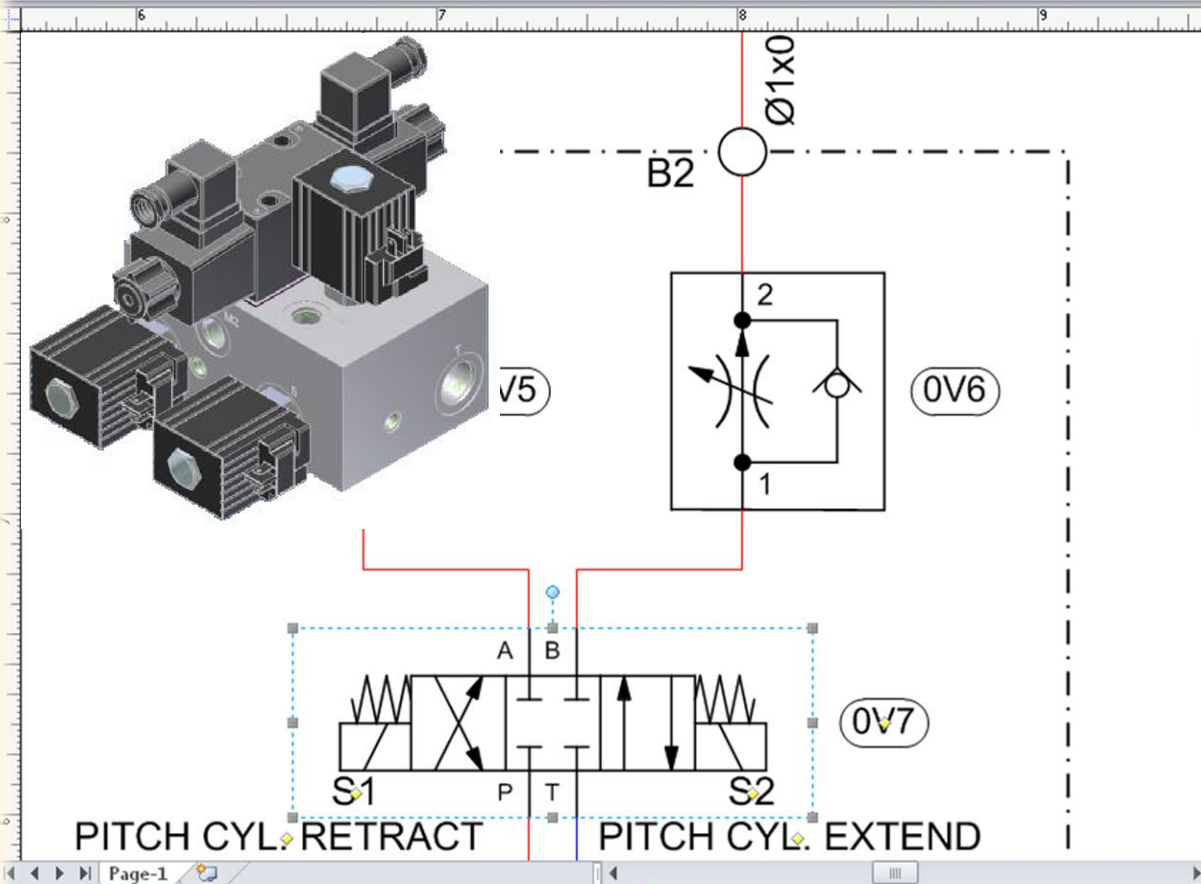
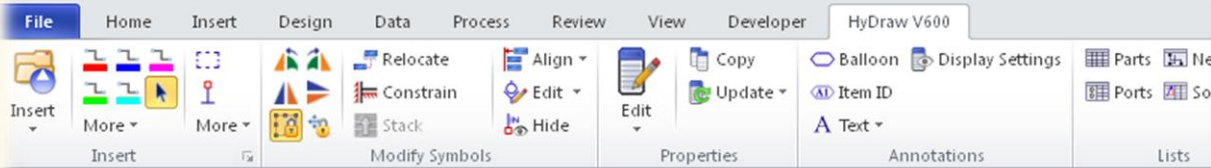
Pressure (psi)	
Flow (gpm)	

Port Data

Port Type	SAE Flange
Description	1" Code 61 SAE Flange
Port Size	1" Code 61
Cavity Name	1" Code 61
Rated Pressure (bar)	206.8
Pressure Line Max Flow {L}	185.46
Return Line Max Flow {LPI}	94.62
Mounting	Flange
Nominal ID (mm)	1
With O-ring	Yes
With Through Bolt Holes	Yes

Accessories





Export to MDTools - Linked CAD data

Information about CAD files linked to components is exported to MDTools to automatically assemble the component models on the block.

Model Data

Model Code	4WE10E73	ENHANCED
Model Family	4WE10E73	
Part Number		
Description	Direction Control Valve	
Manufacturer	Bosch Rexroth	
Cost		
Assembly Cost		
List Price		
Rated Flow (LPM)	7	
Pressure Loss @ Rated Flow		
Rated Pressure (bar)	350	
Cavity/Footprint/Interface	D03	
Malfunction Flow (LPM)		
Voltage		
Frequency		
Bolt Shoulder Height (mm)		
Installation Torque (Steel)	11.4 lb.ft./15.5 Nm	
Installation Torque (Aluminum)	11.4 lb.ft./15.5 Nm	
Catalog Number	RE 23183/04.05	
Cracking Pressure (psi)		

Accessories

Linked data

- Documents
- CAD Model

QuickManifold : Submit Design - Advanced Design Parameters

Specify advanced design parameters for External Ports, Valves, Cross-Pilot, and Misc.



File Home Insert Design Data Review View Developer HyDraw V600

Insert More More

Relocate Align Edit Hide

Copy Update

Balloon Item ID Text

Display Settings Parts Ports

Properties Annotations

QuickManifolds : Submit Design

Geometry

Design Unit
 inch
 mm
 Go to QuickManifolds.com to change your design unit.

Design

Mounting
 None
 Threaded Bolt Hole
 Thru. Hole

Mounting Face
 Back

Design Parameters

Wall Thickness: 0.188

Component Clearance: 0.03

Drill Slenderness Ratio: 24

Manifold Material: {None}

Drill Diameters: ANSI Inch Drills

X-Drill Standard: SAE Plug Ports

Advanced Options Save

Advanced Options

External Ports Valves Cross-Pilot Misc.

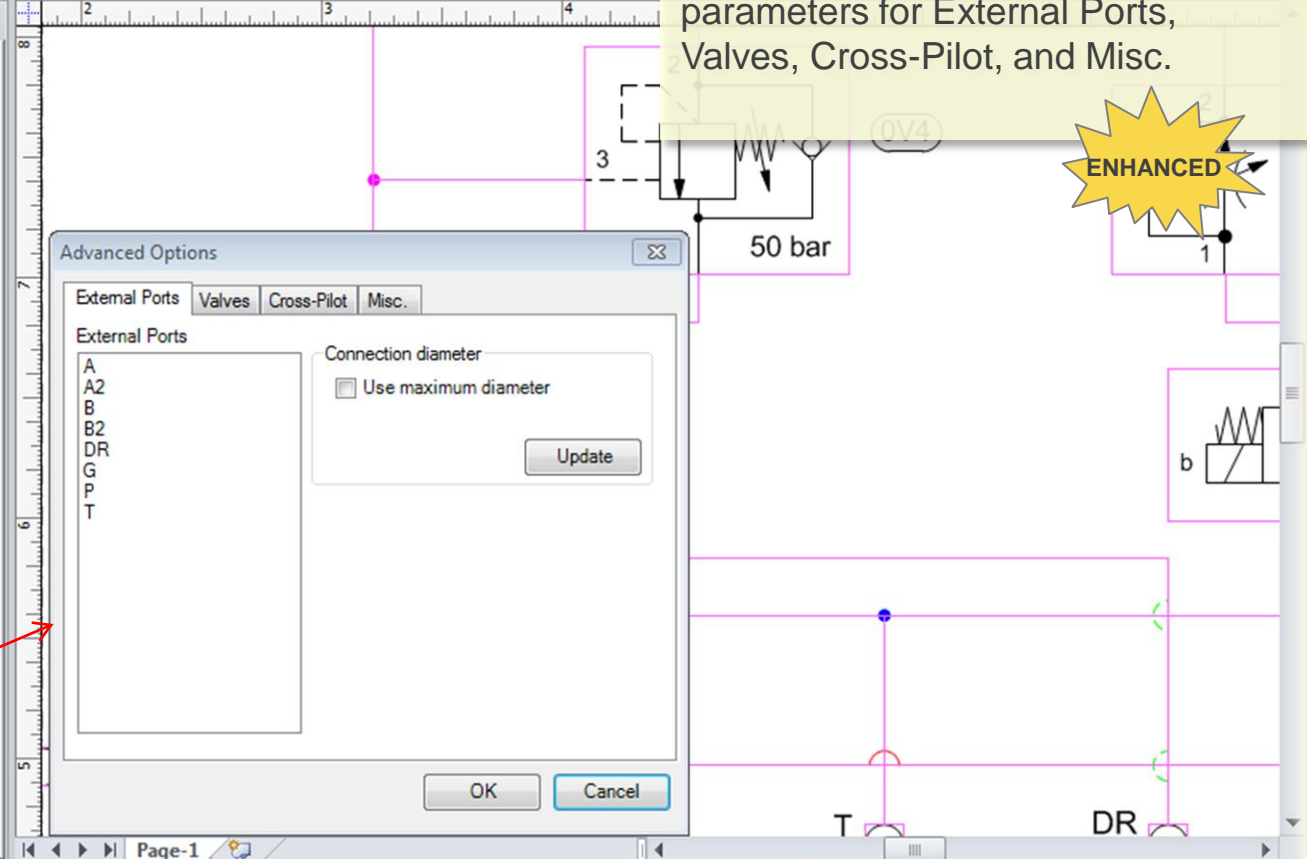
External Ports

A
A2
B
B2
DR
G
P
T

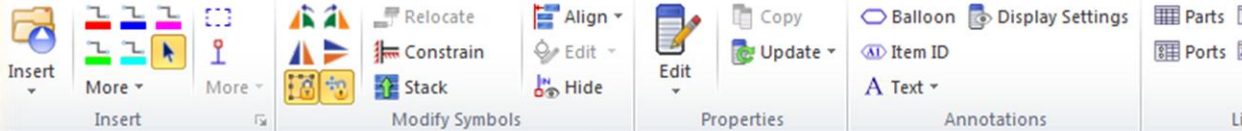
Connection diameter
 Use maximum diameter

Update

OK Cancel



File Home Insert Design Data Review View Developer HyDraw V600



QuickManifold : Submit Design - Advanced Constraints

Specify constrained location of a valve or port cavity relative to another valve or port cavity on the manifold.

ENHANCED

QuickManifolds : Submit Design

Geometry

Top Front Bottom
 Left Right Back

Design

Constraints

Submit

Top Front Bottom

Left Right Back

Advanced Options Save

Advanced Constraints

External Ports

A
A2
B
B2
DR
G
P
T

Valves

OV3
OV7

Specify Location

Top

X - Distance: 0
Y - Distance: 0

Align with: T
 Horizontally
 Vertically

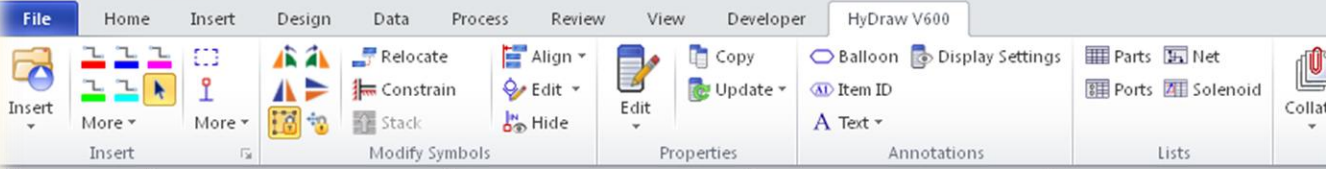
Save

Left Front Right Back

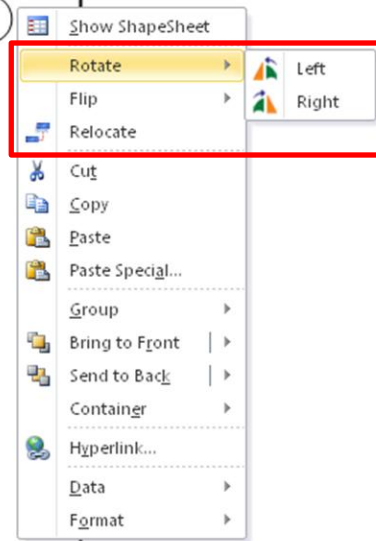
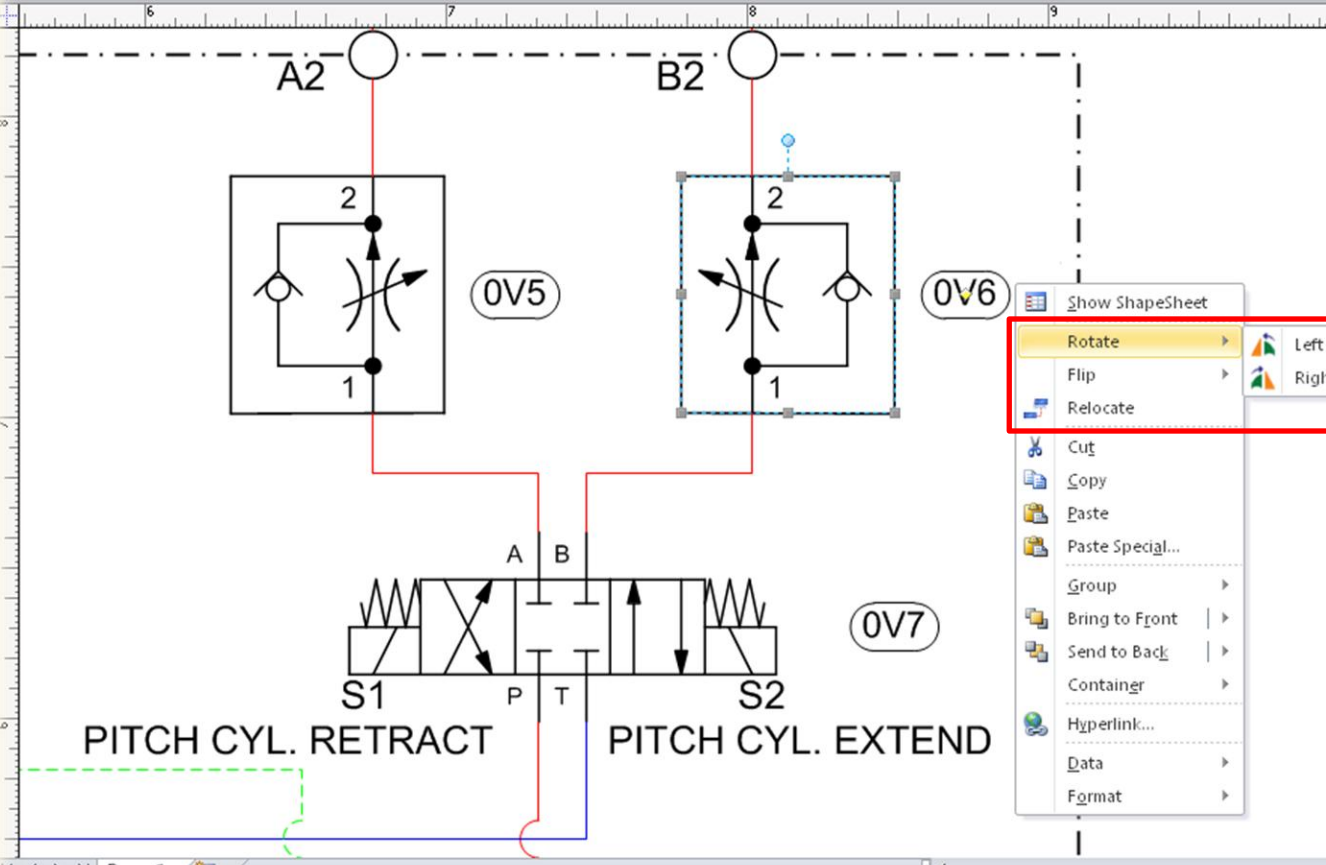
Bottom

OK Cancel

<<



Symbol Context Menu
Frequently used symbol manipulation commands are available on right click, context menu.



Library Manager 2012

Manage Libraries Add/Create/Edit/Delete items from the following libraries

- Component Library Select Library -> Edit/Create Symbol -> Link Existing Model/Create New Model & Link
- Accessory Library Edit/Create Accessory -> Link CAD Files / Link Documents
- External Port Library Edit/Create External Port
- Sub-system Library Edit/Create
- Pipe & Tube Library Edit/Create

Pipe and Tube Library

Create Pipe and Tube Library.

Note: If you are using the DWG based version of HyDraw then you can use the Drawing Application and create a symbol or sub-system.



Manage Lists Add/Create/Edit/Delete items from the following lists

- Symbols
- Documents
- CAD Files
- Connection Types
- Component Types
- Model Data
 - Cavity/Footprint/Interface
 - Manufacturer
 - Catalog Number

HyDraw Library Manager 2012 - [Pipe & Tube Library]

Main Menu Units Library Path Help About Library Manager

Search by: Type: Tube, Material: Steel

Material	Nominal Size	Inner Diameter	Outer Diameter	Wall Thickness (in)	Pressure (psi)
Steel	1\8	0.065	0.125	0.03	1960
Steel	1\8	0.069	0.125	0.028	1800
Steel	3\16	0.123	0.187	0.032	1330
Steel	3\16	0.127	0.187	0.03	1230
Steel	1\4	0.18	0.25	0.035	1070
Steel	1\4	0.186	0.25	0.032	950
Steel	5\16	0.242	0.312	0.035	840
Steel	5\16	0.248	0.312	0.032	760
Steel	1\2	0.43	0.5	0.035	2330
Steel	1\2	0.436	0.5	0.032	2130
Steel	3\4	0.532	0.75	0.109	1160
Steel	3\4	0.56	0.75	0.095	990
Steel	1	0.76	1	0.12	940
Steel	1	0.782	1	0.109	850

Selected tube properties: Material: Steel, Nominal Size: 1\4, Outer Diameter (in): 0.25, Wall Thickness (in): 0.032, Pressure (psi): 950

HyDraw Library Manager 2012 - [Manage Component Display Formats]

Main Menu Units Library Path Help About Library Manager

Available display formats

Name	Prefix	Linked Property 1	Display Unit	Suffix	Prefix	Linked Property 2	Display Unit	Suffix
Beta Ratio		Beta Ratio	<input type="checkbox"/>					
Cavity/Footprint/Interface		Cavity/Footprint/Interface	<input type="checkbox"/>					
Compensator Set...		Compensator Set...	<input checked="" type="checkbox"/>					
Compensator Set...		Compensator Set...	<input checked="" type="checkbox"/>					
Compensator Set...		Compensator Set...	<input checked="" type="checkbox"/>					
Compensator Set...		Compensator Set...	<input checked="" type="checkbox"/>					
Cracking Pressure		Cracking Pressure	<input checked="" type="checkbox"/>					
Cylinder Size	Ø	Bore	<input type="checkbox"/>	x		Rod Diameter		
Displacement		Displacement	<input checked="" type="checkbox"/>					
Displacement, Co...		Displacement, Co...	<input checked="" type="checkbox"/>					
Displacement, Mi...		Displacement, Mi...	<input checked="" type="checkbox"/>					
Displacement, Sh...		Displacement, Sh...	<input checked="" type="checkbox"/>					
Flow Setting		Flow Setting	<input checked="" type="checkbox"/>					
Micron Rating		Micron Rating	<input type="checkbox"/>					
Nominal Size		Nominal Size	<input type="checkbox"/>					
Pilot Ratio		Pilot Ratio	<input type="checkbox"/>					
Port Size		Port Size	<input type="checkbox"/>					
Port Size Ext		Port Size Ext	<input type="checkbox"/>					
Port Size Ret		Port Size Ret	<input type="checkbox"/>					
Port Size, Aux. R...		Port Size, Aux. R...	<input type="checkbox"/>					
Port Size, Drain		Port Size, Drain	<input type="checkbox"/>					
Port Size, Gauge		Port Size, Gauge	<input type="checkbox"/>					

New Display Format

Selected display format

Name: Cylinder Size

Linked property 1: Bore

Display unit Prefix: Ø Suffix:

Linked property 2: Rod Diameter

Display unit Prefix: x Suffix:

Linked property 3: Stroke

Display unit Prefix: / Suffix:

Assign to Component Type

Component Display Formats

Define Components Display Formats to display properties with suffix and/or prefix.

Display compound properties using the display format.



CAD Files

Connection Types

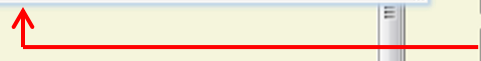
Component Types

Model Data

Cavity/Footprint/Interface

Manufacturer

Catalog Number



Manage Properties Add/Edit/Delete properties

Component

Model Properties

Design Properties

Display Formats

External Port

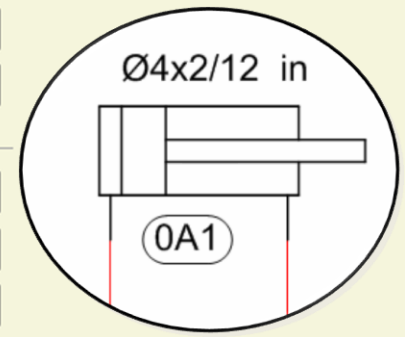
Model Properties

Design Properties

Display Formats

Connection

Model Properties



HyDraw Library Manager 2012 - [Manage Connection Display Formats]

Main Menu Units Library Path Help About Library Manager

Available display formats New Display Format ✕

Name	Prefix	Linked Property 1	Display Unit	Suffix	Prefix	Linked Property 2	Display Unit	Suff
Size		Outer Diameter		x		Wall Thickness		✓

Selected display format Save Display Format

Name: Size

Linked property 1: Outer Diameter

Display unit Prefix: Suffix: x

Linked property 2: Wall Thickness

Display unit Prefix: Suffix:

Linked property 3:

Display unit Prefix: Suffix:

Connection Display Formats

Define Connection Display Formats to display properties with suffix and/or prefix.

Display compound properties using the display format.



& Link

Manage Properties Add/Edit/Delete properties

External Port

Model Properties

Design Properties

Display Formats

Connection

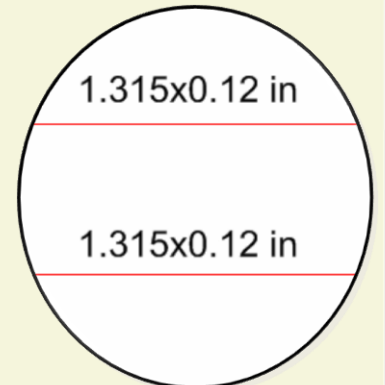
Model Properties

Design Properties

Display Formats

Sub-system

Properties



- CAD Files
- Connection Types
- Component Types
- Model Data
 - Cavity/Footprint/Interface
 - Manufacturer
 - Catalog Number

HyDraw Library Manager 2012 - [Manage External Port Display Formats]

Main Menu Units Library Path Help About Library Manager

Available display formats New Display Format ✕

Name	Prefix	Linked Property 1	Display Unit	Suffix	Prefix	Linked Property 2	Display Unit	Suff
Size		Pot Size	<input checked="" type="checkbox"/>				<input checked="" type="checkbox"/>	

Selected display format Save Display Format

Name: _____ Size: _____

Linked property 1: Pot Size ...

Display unit Prefix: Suffix:

Linked property 2: ...

Display unit Prefix: Suffix:

Linked property 3: ...

Display unit Prefix: Suffix:

External Port Display Formats

Define External Port Display Formats to display properties with suffix and/or prefix.

Display compound properties using the display format.



CAD Files

Connection Types

Component Types

Model Data

Cavity/Footprint/Interface

Manufacturer

Catalog Number

Manage Properties Add/Edit/Delete properties

Component _____

Model Properties

Design Properties

Display Formats

External Port _____

Model Properties

Design Properties

Display Formats

Connection _____

Model Properties

Main Menu | Units | Library Path | Help | About Library Manager

Search by

Application
Hydraulic

Name

Available component types

- Pressure Reducing Valve - Sol. Operated - Screw-in Cartridge
- Pressure Reducing Valve - Sol. Operated - Stack Module
- Pressure Reducing Valve - Sol. Operated - Surface Mounted
- Pressure Reducing Valve - Stack Module
- Pressure Reducing Valve - Surface Mounted
- Pressure Switch
- Pump Fixed Double
- Pump Fixed Single
- Pump Fixed Triple
- Pump Variable Double
- Pump Variable Single
- Pump Variable Triple
- Relief Valve - Flange Mounted
- Relief Valve - Line Mounted
- Relief Valve - Proportional - Flange Mounted
- Relief Valve - Proportional - Line Mounted
- Relief Valve - Proportional - Screw-in Cartridge**
- Relief Valve - Proportional - Stack Module
- Relief Valve - Proportional - Surface Mounted
- Relief Valve - Screw-in Cartridge
- Relief Valve - Sol. Operated - Flange Mounted
- Relief Valve - Sol. Operated - Line Mounted
- Relief Valve - Sol. Operated - Stack Module
- Relief Valve - Sol. Operated - Surface Mounted
- Relief Valve - Stack Module
- Relief Valve - Surface Mounted
- Reservoir
- Seal Kit
- Sectional Valve - Inlet Section
- Sectional Valve - Outlet Section
- Sectional Valve - Working Section - Air Pilot Operated
- Sectional Valve - Working Section - Hydraulic Pilot Operated
- Sectional Valve - Working Section - Manual Operated
- Sectional Valve - Working Section - Proportional
- Sectional Valve - Working Section - Solenoid Controlled Pilot Operated
- Sectional Valve - Working Section - Solenoid Operated
- Sequence Valve - Flange Mounted
- Sequence Valve - Line Mounted
- Sequence Valve - Screw-in Cartridge
- Sequence Valve - Stack Module
- Sequence Valve - Surface Mounted
- Servo Valve
- Shut off and Ball Valve - Line Mounted
- Shut off and Ball Valve - Surface Mounted
- Shuttle Valve - Line Mounted

Component Type - Display Formats

Define formatted labels to be displayed in the drawing for a component type.

NEW

Flow
Pressure

Model properties

- Model Code
- Model Family
- Part Number
- Description
- Manufacturer
- Cost
- Assembly Cost
- List Price
- Rated Flow
- Pressure Loss @ Rated Flow
- Rated Pressure
- Type
- Cavity/Footprint/Interface
- Pressure Min
- Pressure Max
- Pressure Setting
- Vent Spring Pressure
- Installation Torque (Aluminum)
- Installation Torque (Steel)
- Voltage
- Frequency Response

Display formats

- Cavity/Footprint/Interface
- Pressure Setting

- Hydraulic Symbols
- Pump
 - Directional Control Valve
 - Check and Shuttle Valve
 - Flow Control and Shut Off Valve
 - Pressure Control Valve
 - Stackable Valve
 - Flange Valve
 - Proportional Valve
 - Servo Valve
 - Slip-In Cartridge Valve
 - Screw-In Cartridge Valve
 - Check
 - Pilot Op. Check
 - Flow Control
 - Flow Divider
 - Hand Pump
 - Counterbalance and Load Control
 - Pressure Control
 - Proportional
 - Directional non-solenoid controlled
 - 2/2 Way
 - 2/3 Way
 - 2/4 Way
 - 2/6 Way
 - 3/3 Way
 - 3/4 Way
 - 3/5 Way
 - Logic Element
 - Filter
 - Empty Cavities
 - Velocity Fuse
 - Filter and Strainer
 - Hydraulic Motor and Rotary Actuator
 - Cylinder
 - Manifold and Subplate
- Search symbols by

Available symbols

Add New Symbol | Edit Symbol

Note: If you are using the DWG based version of HyDraw then go to Drawing Application and use the Library Explorer to add or modify symbol.

Dual Port Name

Models linked to selected symbol | Link Existing Model

Define the alternate functional port name for screw-in cartridge valve symbols in the library.



Selected model properties | Save Model

Model Data

Accessories

Documents

CAD Files

Edit Master Symbol

Edit port

Name	Other Name
P	1
A	2
B	3
T	4

Insert port

Name | Other Name | Insert

Display formats

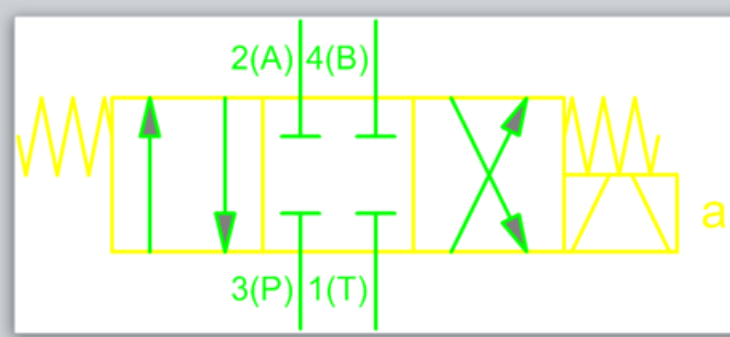
Cavity/Footprint/Interface

Solenoid information

Solenoid a | Solenoid b | Solenoid ID | Update

Display | Name | Other Name | Building Blocks | Open Drawing Window

OK | Cancel



My Hydraulic Librar ...

Direction Contro Valve

Available symbols

Note: If you are using the DWG based version of HyDraw then go to Drawing Application and use



Manage Symbol Library

<p>Libraries</p> <ul style="list-style-type: none"> Hydraulic Symbols Pneumatic Symbols Electrical Symbols My Symbol Library My Hydraulic Library 	<p>Library name</p> <p>My Hydraulic Library</p> <p>Parent library</p> <p>Hydraulic Symbols</p> <p>Rename Add New</p>
---	--

Delete Close

Child Symbol Library

Create custom child symbol library of frequently used symbols from an existing library.



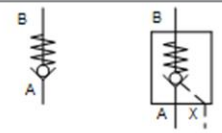
Search symbols by

My Favorite ...

SICV
Check

Available symbols

Note: If you are using the DWG based version of HyDraw then go to Drawing Application and use the Library Explorer to add or modify symbol.



Child Symbol Library - Import Symbols

Import symbols to child library from the parent library.



Import Symbol from Parent Library

Hydraulic Symbols	Available symbols	Selected symbols
<ul style="list-style-type: none"> Pump Directional Control Valve Check and Shuttle Valve <ul style="list-style-type: none"> Check <ul style="list-style-type: none"> Line Mounted Surface Mounted Shuttle Pre-Fill Flow Control and Shut Off Valve Pressure Control Valve Stackable Valve Flange Valve Proportional Valve Servo Valve Slip-In Cartridge Valve Screw-In Cartridge Valve Filter and Strainer Hydraulic Motor and Rotary Actuator Cylinder Manifold and Subplate Gauge, Switch and Measuring Device Accumulator Heat Exchanger Electric Motor Hoses and Connectors Reservoir and Power Unit components Miscellaneous Mobile Valves 		

OK Cancel

- Add New Symbol
- Build New Symbol
- Import Symbol
- Configure & Add DC Valve Symbol
- Edit Symbol
- Edit Component Type
- Add Visio Symbol
- Delete Symbol

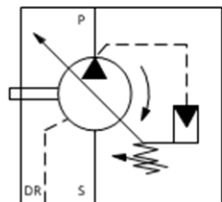
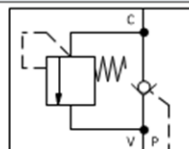
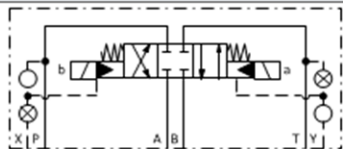
Search symbols by

Hydraulic Symbols

- [-] Pump
- [-] Directional Control Valve
- [-] Check and Shuttle Valve
- [-] Flow Control and Shut Off Valve
- [-] Pressure Control Valve
- [-] Stackable Valve
- [-] Flange Valve
- [-] Proportional Valve
- [-] Servo Valve
- [-] Slip-In Cartridge Valve
- [-] Screw-In Cartridge Valve
- [-] Filter and Strainer
- [-] Hydraulic Motor and Rotary Actuator
- [-] Cylinder
- [-] Manifold and Subplate
- [-] Gauge, Switch and Measuring Device
- [-] Accumulator
- [-] Heat Exchanger
- [-] Electric Motor
- [-] Hoses and Connectors
- [-] Reservoir and Power Unit components
- [-] Miscellaneous

Available symbols

Note: If you are using the DWG based version of HyDraw then go to Drawing Application and use the Library Explorer to add or modify symbol.



Search Symbols in Library Manager

Search for symbols in the Library Manager based on the modified date, component type, model code, and description.

NEW

Search symbols by

Date modified

3/29/2012

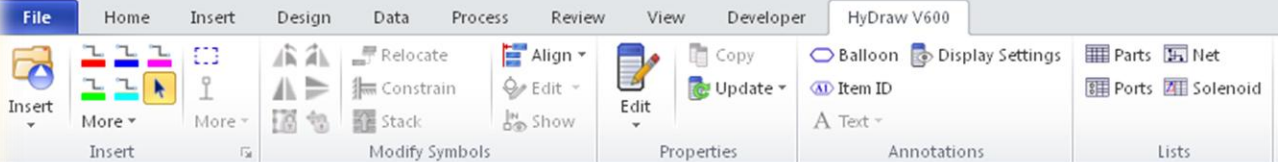
Compo

March, 2012

Model

	Sun	Mon	Tue	Wed	Thu	Fri	Sat
Model	26	27	28	29	1	2	3
	4	5	6	7	8	9	10
Model	11	12	13	14	15	16	17
	18	19	20	21	22	23	24
	25	26	27	28	29		

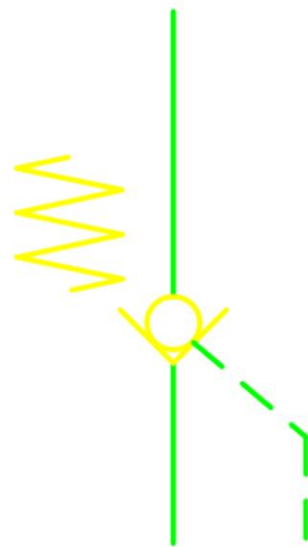
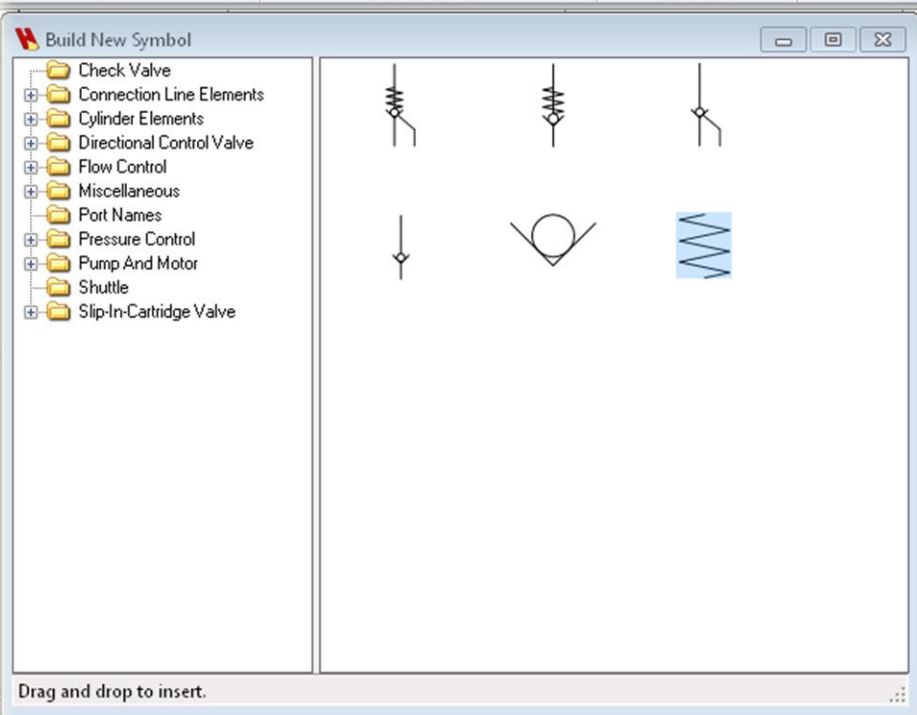
Today: 3/29/2012



Build New Symbol - Building blocks

Newly structured and easy to use basic symbol building elements, per ISO 1219-1, are available for creating new symbols.

NEW



Hydraulic Symbols

- Pump
- Directional Control Valve
 - Stackable Symbol
 - Non-Stackable Symbol
 - Solenoid Operated
 - D03_D05 / ISO 4401 - 03,05 Size
 - Single Solenoid
 - Double Solenoid
 - No Spring
 - No Spring, Detented
 - Spring Centered
 - Poppet Valve
 - Solenoid Controlled Pilot Operated
 - Hydraulic Pilot Operated
 - Manually Operated
 - Mechanically Operated
 - Air Pilot Operated

Available symbols

Note: If you are using the DWG based version of HyDraw then go to Drawing the Library Explorer to add or modify symbol.

Buttons: Add New Symbol, Edit Symbol, Edit Component, Add Visio Symbol

Edit Master Symbol - Solenoid Information

Define the default location of the solenoid ID and function by adding the text to the symbol in the library.

Selected model properties

Model Data

Accessories

Documents

ENHANCED

Edit Master Symbol

Edit port

Name	Other Name
P	
A	
B	
T	

Insert port

Name: Other Name: [Insert]

Display formats

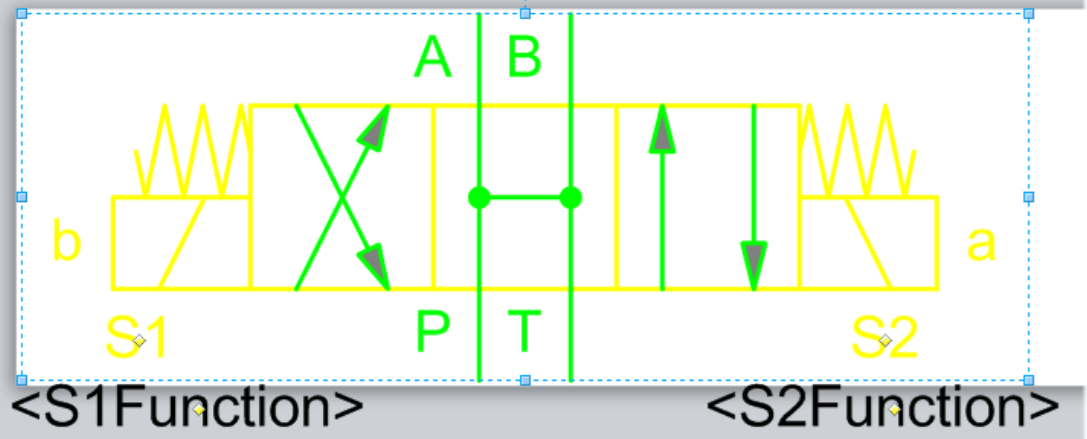
Cavity/Footprint/Interface

Solenoid information

Solenoid a	Solenoid b
Solenoid ID: S2	S1

[Update]

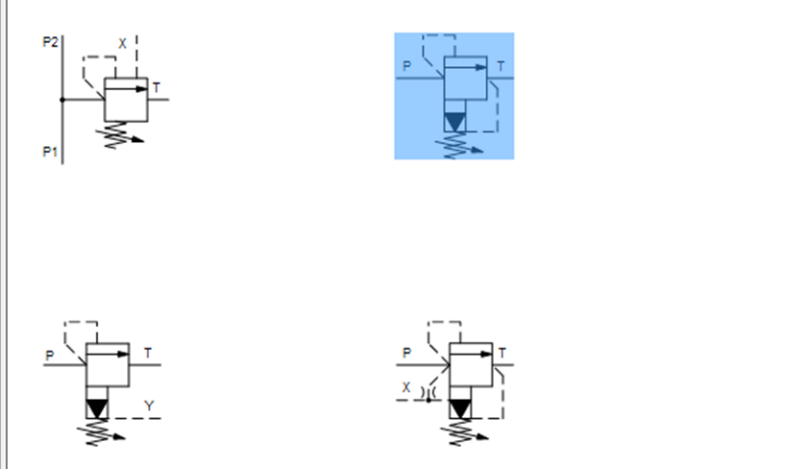
Buttons: OK, Cancel



- Hydraulic Symbols
- Pump
- Directional Control Valve
- Check and Shuttle Valve
- Flow Control and Shut Off Valve
- Pressure Control Valve
 - Relief
 - Line Mounted
 - Surface Mounted
 - Sequence
 - Unloading
 - Reducing
 - Counterbalance
- Stackable Valve
- Flange Valve
- Proportional Valve
- Servo Valve
- Slip-In Cartridge Valve
- Screw-In Cartridge Valve
- Filter and Strainer
- Hydraulic Motor and Rotary Actuator
- Cylinder
- Manifold and Subplate
- Gauge, Switch and Measuring Device

Available symbols

Note: If you are using the DWG based version of HyDraw then go to Drawing Application and use the Lib modify symbol.



Add New Symbol

Edit Symbol

Edit Symbol

Edit Component Type

Add Visio Sym

Edit Master Symbol - Display Format

Define the default location for Display Format text by adding the text to the symbol in the library.



Edit Master Symbol

Edit port

Name	Other Name
P	
T	

Insert port

Name: Other Name:

Insert

Display formats

- Port Size, Drain
- Port Size, Pressure
- Port Size, Tank
- Pressure Setting

Solenoid information

Solenoid1: Solenoid2:

Solenoid ID:

Update

Display

Name Other Name

Building Blocks Open Drawing Window

OK Cancel <<

Accessories

Documents

CAD Files

Hydraulic Symbols

- Pump
- Directional Control Valve
- Check and Shuttle Valve
 - Check
 - Line Mounted
 - Surface Mounted
 - Shuttle
 - Pre-Fill
- Flow Control and Shut Off Valve
- Pressure Control Valve
- Stackable Valve

Available symbols

Note: If you are using the DWG based version of HyDraw then go to Draw use the Library Explorer to add or modify symbol.

Add New Symbol Edit Symbol

Edit Symbol

- Edit Component Type
- Add Visio Symbol

Building Blocks in Edit Symbol

Basic symbol building elements, per ISO 1219-1, are available for editing symbols.



Edit Master Symbol

Edit port

Name	Other Name
X	
A	
B	

Display

Name Other Name

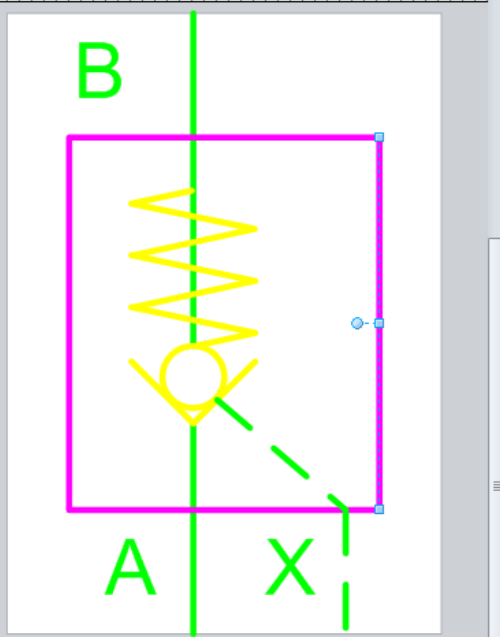
Building Blocks Close Drawing Window

OK Cancel

Build New Symbol

- Check Valve
- Connection Line Elements
- Cylinder Elements
- Directional Control Valve
- Flow Control
- Miscellaneous
- Port Names
- Pressure Control
- Pump And Motor
- Shuttle
- Slip-In-Cartridge Valve

Drag and drop to insert.



Model properties

Name	Data Type	Unit Category	Unit	Display in Drawing
SAP Number	Number	Unitless		<input type="checkbox"/>
Seal Type	Text			<input type="checkbox"/>
Shaft Diameter	Number	Length		<input type="checkbox"/>

Model/Design Properties – Assign to Component Type

Easily assign selected property to multiple component types.

ENHANCED

Assign to Component Type

Assign Property to Component Type

Application: Hydraulic

Component types

- Accumulator
- Accumulator Bladder Kit
- Accumulator Charging Kit
- Accumulator Discharge Valve - Line Mounted
- Accumulator Discharge Valve - Screw-in Cartridge
- Adaptor Plates
- Air Bleed Valve - Line Mounted
- Air Bleed Valve - Screw-in Cartridge
- Amplifier Card and Holder
- Bolt Kit
- Bulb Well
- Cavity Plug
- Check Valve - Flange Mounted
- Check Valve - Line Mounted
- Check Valve - Screw-in Cartridge
- Check Valve - Stack Module
- Check Valve - Surface Mounted
- Coil & Electronics
- Connector
- Counterbalance Valve - Line Mounted
- Counterbalance Valve - Screw-in Cartridge
- Counterbalance Valve - Stack Module
- Counterbalance Valve - Surface Mounted
- Coupling Hub
- Coupling Insert

None

Properties

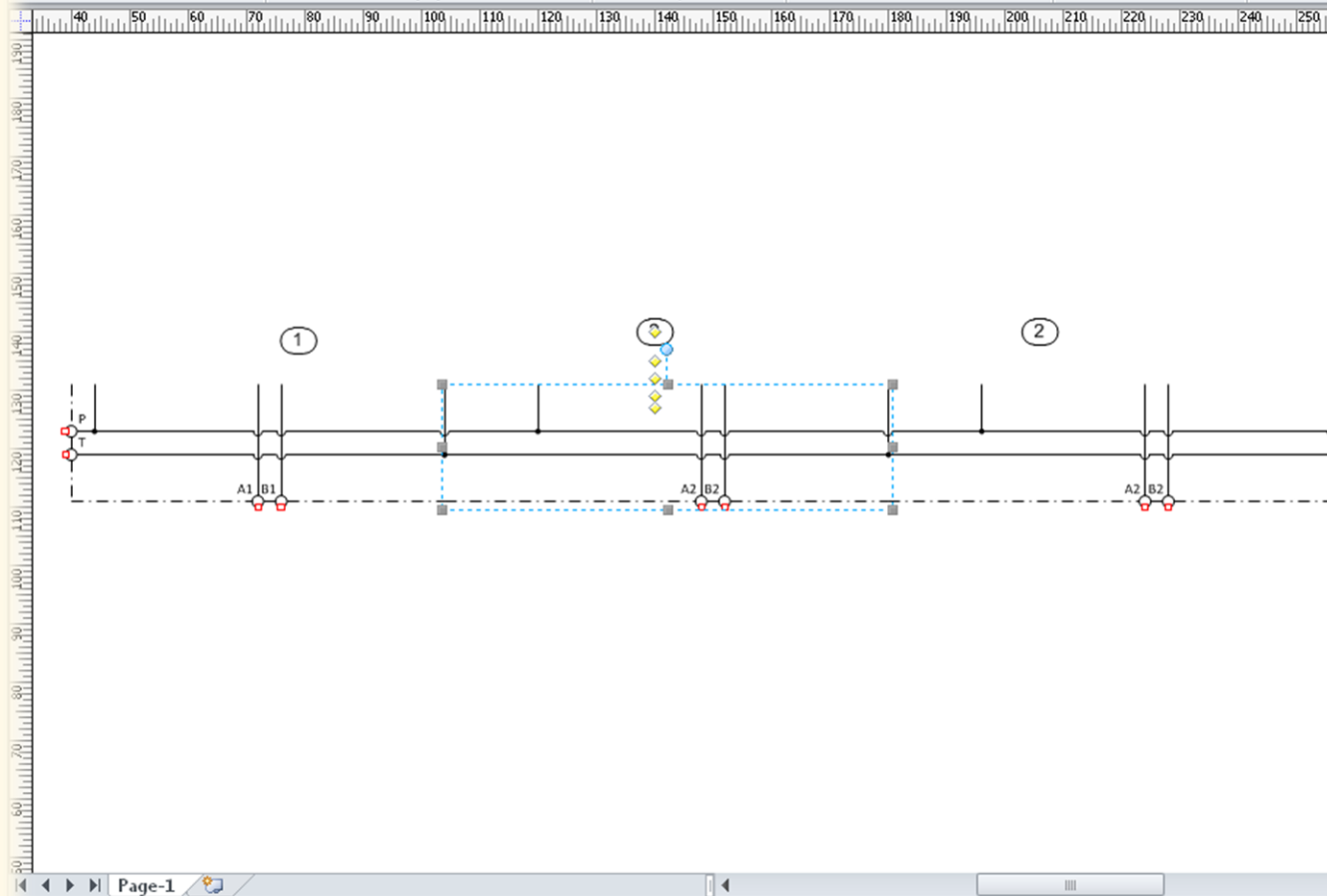
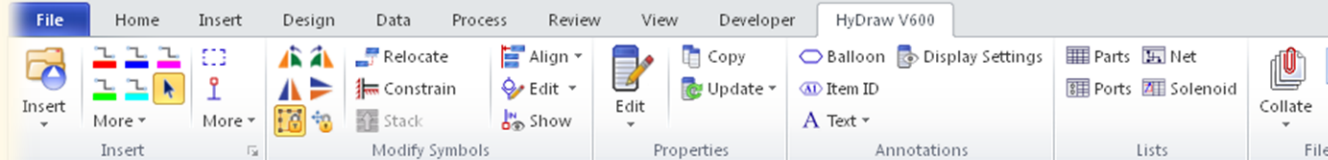
- Model Code
- Model Family
- Description
- Manufacturer
- Cost
- List Price

Insert property

As last property

Below selected property

OK Cancel



New Component Type - None

Create components with the 'None' Component type. Symbol with component type 'None' is not listed in the Parts list and Property manager.

ModelData

Accessories

ENHANCED

Linked data

Contact Enhance your productivity and competitive edge with **HyDraw®**



HyDraw® V600 Evaluation Software

Call: +01 (248) 649 9550

Email: sales@VESTusa.com
support@VESTusa.com

Visit: www.VESTusa.com

