

HyDraw Library 2022

Database Migration

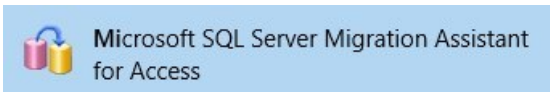
Access (2000) to MS SQL (2012 or higher)

Contents

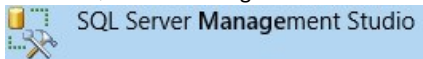
Prerequisites	3
Default Location of HyDraw Library Access database files (*.mdb)	4
Prepare HyDraw Library Access databases files (mdb) for Migration	4
Create New Databases	5
Migrate HyDraw Library	7
Migrate Symbol Data	13
Migrate Subsystem Data	18

Prerequisites

1. Microsoft Access 2010 or higher.
2. Microsoft SQL Server Migration Assistant for Access.



3. Microsoft SQL Express 2012 or higher.
4. Microsoft SQL Server Management Studio 2012 or higher.



5. Microsoft® OLE DB Driver 18 for SQL Server® x 64 version: [Download Microsoft OLE DB Driver for SQL Server - OLE DB Driver for SQL Server | Microsoft Learn](#)

Default Location of HyDraw Library Access database files (*.mdb)

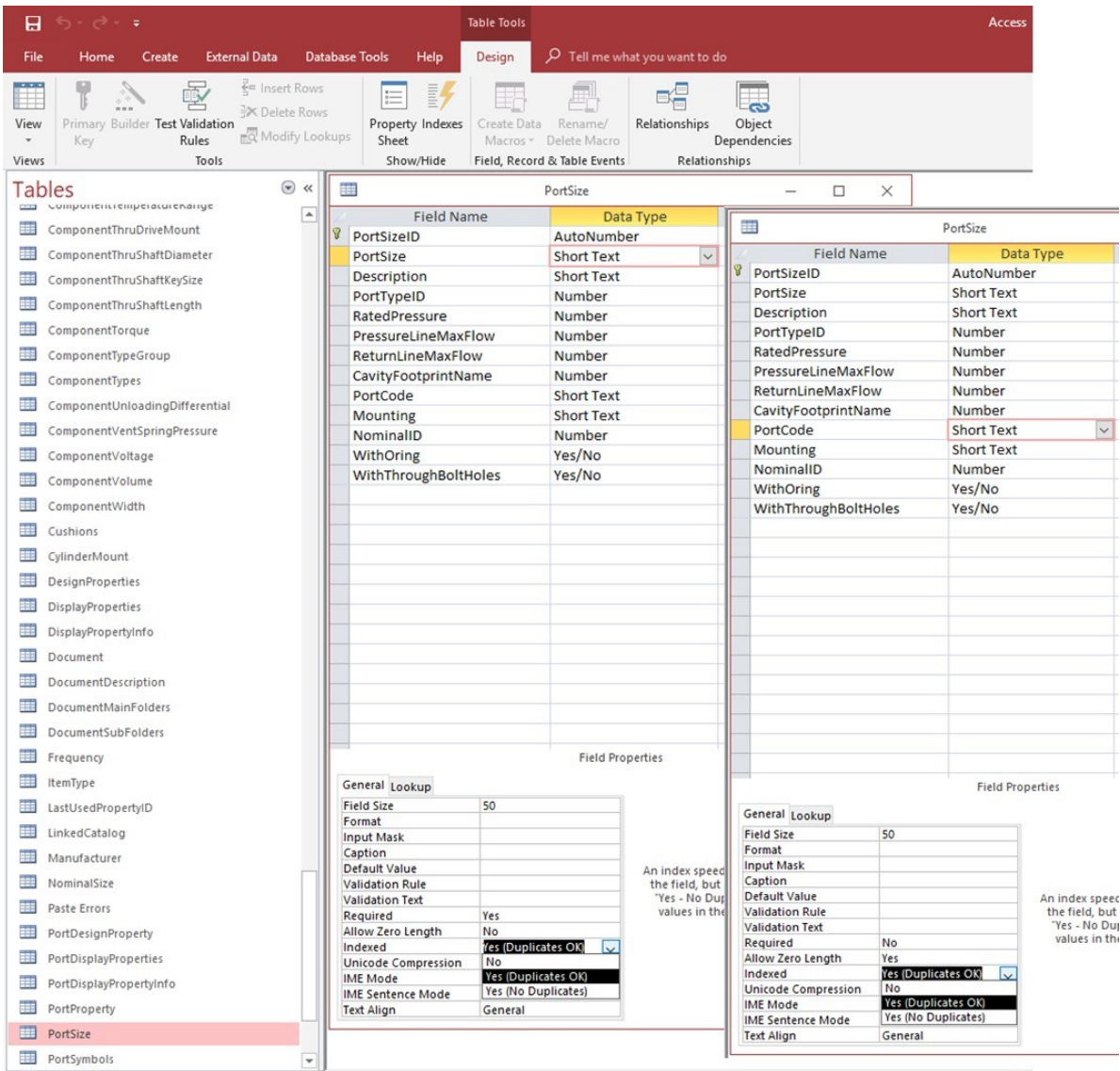
HyDraw Library Access Database Files	Default Location
ComponentData.mdb	C:\VEST\HyDraw Library 2022\Data
GeometryData.mdb	
HyDrawData.mdb	
HyDrawDataMigration.mdb	
ManifoldManufacturing.mdb	
SymbolBuilder.mdb	
DemoGenericData.mdb	
ElectricalGenericData.mdb	C:\VEST\HyDraw Library 2022\Symbol Library\Electrical Symbols\MenuData
HydraulicGenericData.mdb	C:\VEST\HyDraw Library 2022\Symbol Library\Hydraulic Symbols\MenuData
PneumaticGenericData.mdb	C:\VEST\HyDraw Library 2022\Symbol Library\Pneumatic Symbols\MenuData
SubsystemData.mdb	C:\VEST\HyDraw Library 2022\Subsystems\MenuData

Note:

- If you use any Custom libraries or Child libraries in HyDraw then you also need to migrate these databases.
- The path may vary, if you use an upgraded library from a previous version of HyDraw with custom location.

Prepare HyDraw Library Access databases files (mdb) for Migration

1. Open ComponentData.mdb in Microsoft Access.
2. Right-click the **PortSize** table and select **Design View** menu.
3. Select **PortSize** field name and change the indexed property to **Yes** (Duplicates OK).
4. Select **PortCode** field name and change the indexed property to **Yes** (Duplicates OK).
5. Click **Close** and save the changes.



- Open all the *.mdb files, sequentially and delete **Paste Errors** tables and **Queries**, if it exists.

Create New Databases

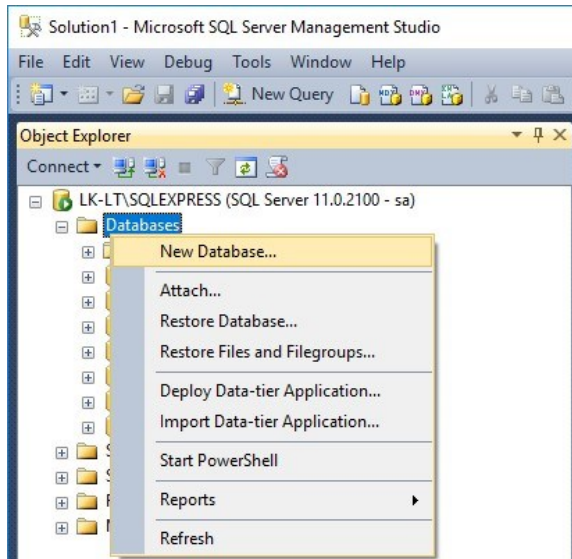
Create new databases in MS SQL 2012 or higher and use Management Studio 2012 or higher with the following names:

- HyDrawData
- DemoGenericData
- ElectricalGenericData
- HydraulicGenericData
- PneumaticGenericData
- SubsystemData

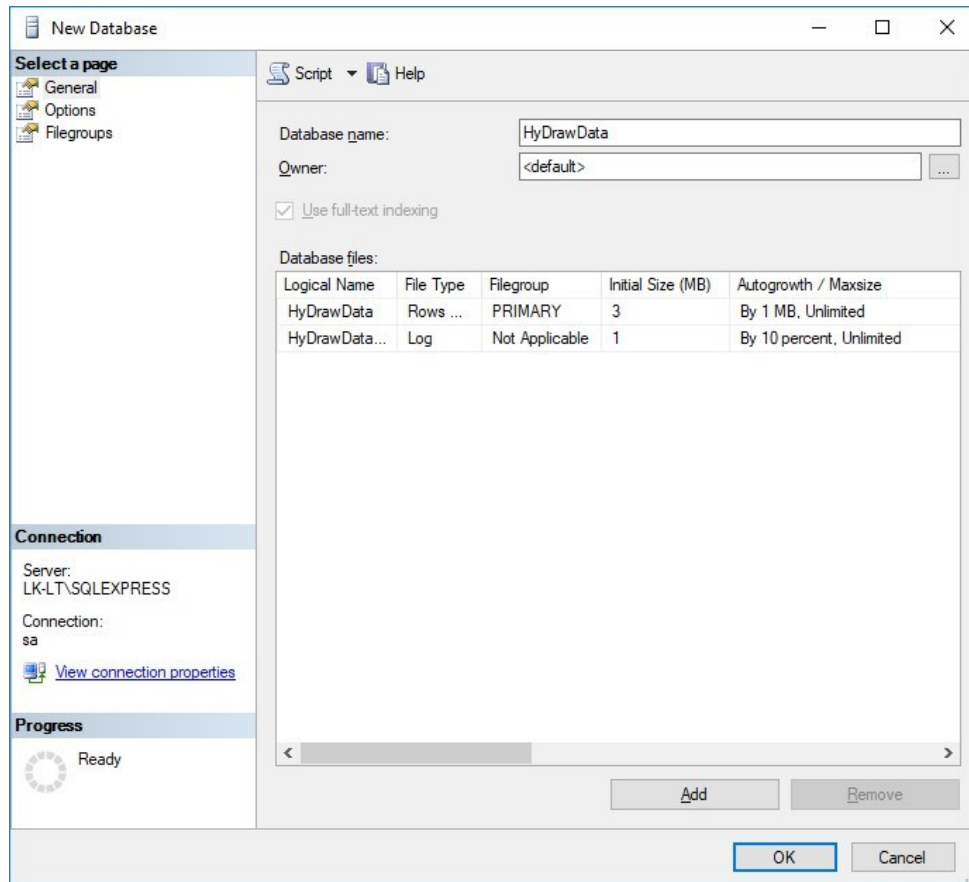
Note:

If you use any Custom libraries or Child Libraries in HyDraw then you will also need to recreate these databases in SQL with the same name as in the HyDraw Library (Access database).

1. In the Management Studio, after connecting to the SQL database, right-click **Databases** and click **New Databases...** from the context menu.



The New Database dialog box displays.

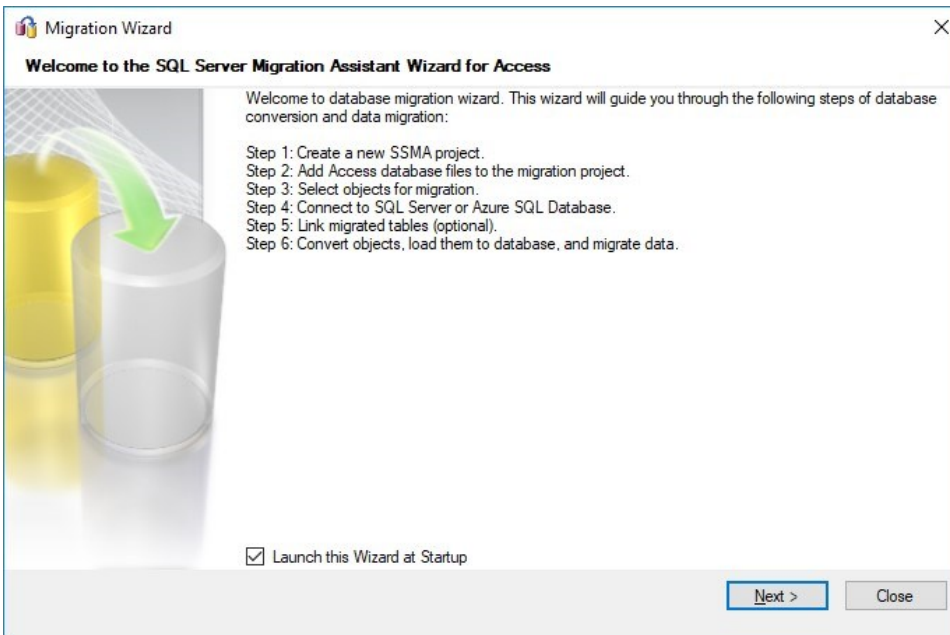


2. Enter **Database name** and click **OK**.
3. Repeat steps 2 and 3, till you create all the new databases.

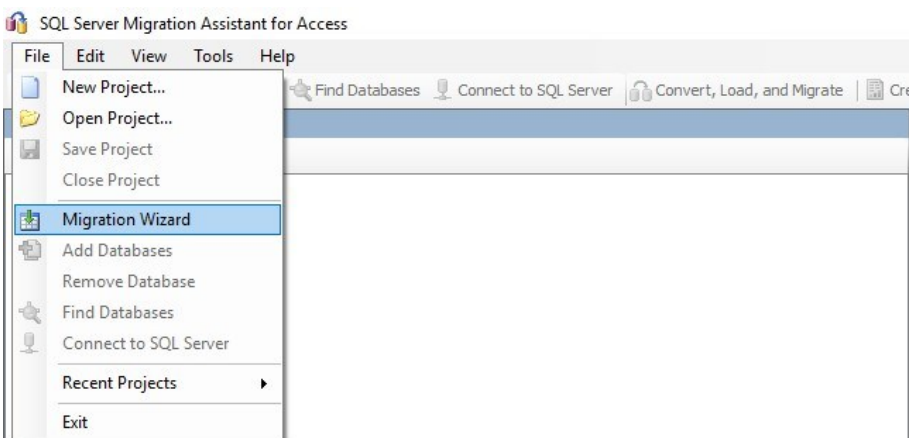
Migrate HyDraw Library

1. Run, Microsoft SQL Server Migration Assistant for Access. (if “Launch this Wizard at Startup” is selected)

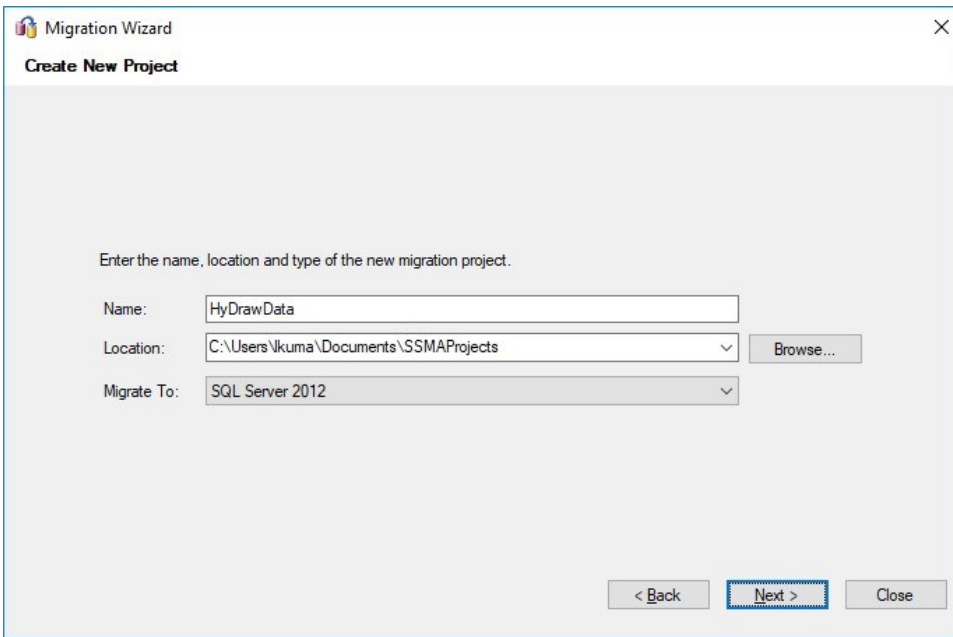
The Migration Wizard dialog box displays.



2. Click **Next**.
Or
Click **File** and select the **Migration Wizard** menu.

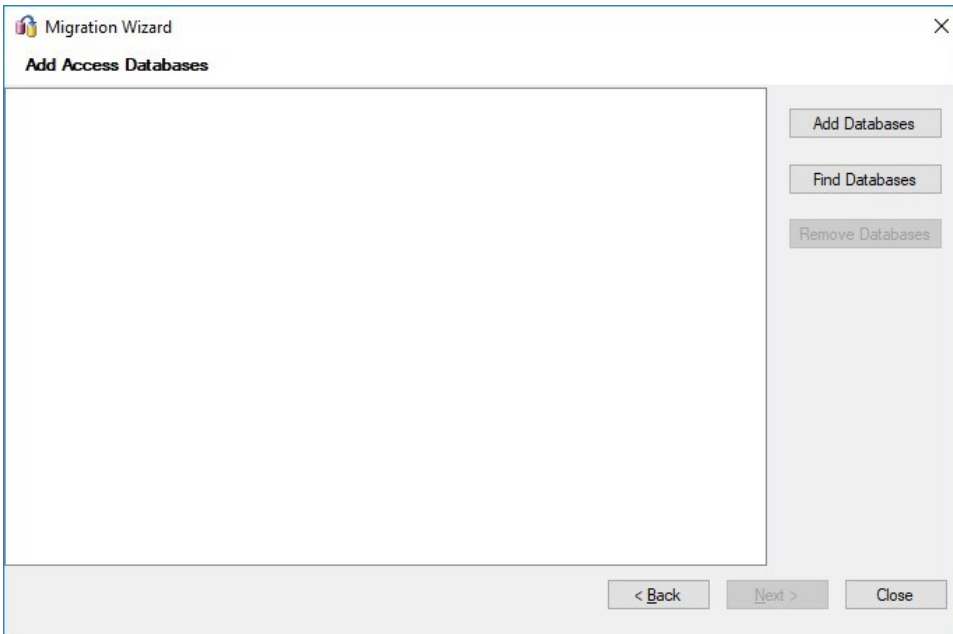


The Migration Wizard: Create New Project dialog box displays.



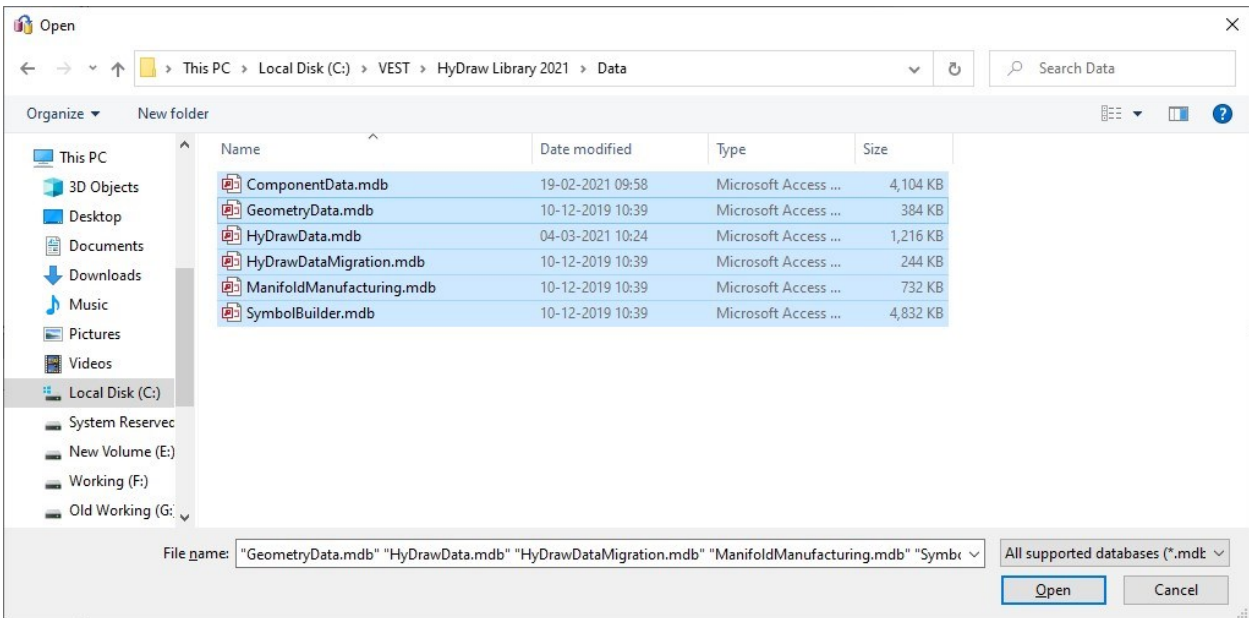
3. Enter **Name**, "HyDrawData".
4. Browse and specify the **Location**, if you require to change the default path.
5. Select **Migrate To**, SQL version.
6. Click **Next**.

The Migration Wizard: Add Access Databases dialog box displays.



7. Click **Add Databases**.

The Open dialog box displays.

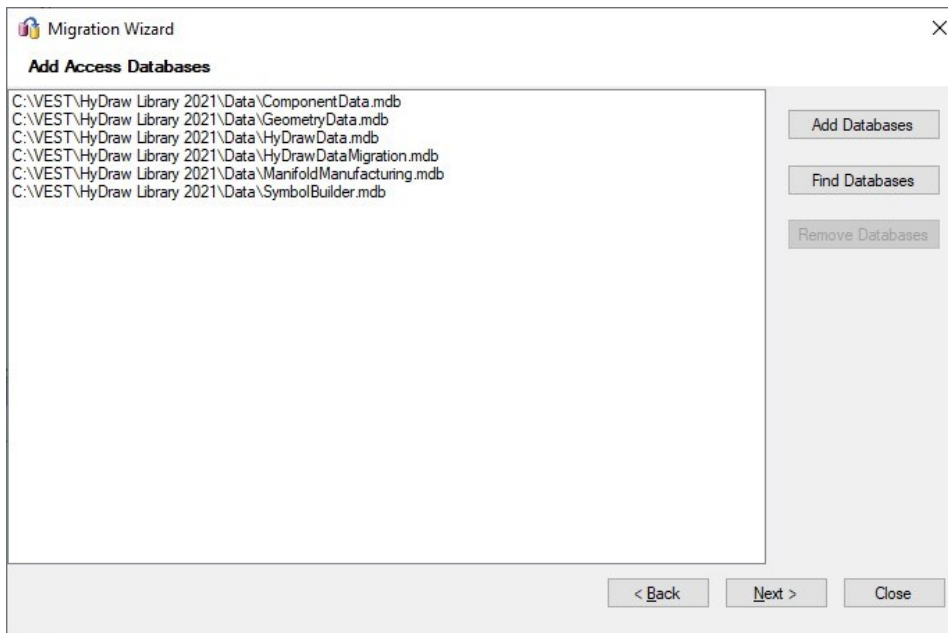


- Browse to the HyDraw Library, Data folder and select ComponentData.mdb, Geometry.mdb, HyDrawData.mdb, HyDrawDataMigration.mdb*, ManifoldManufacturing.mdb* and SymbolBuilder.mdb*.

** Optional, you may ignore for this release.*

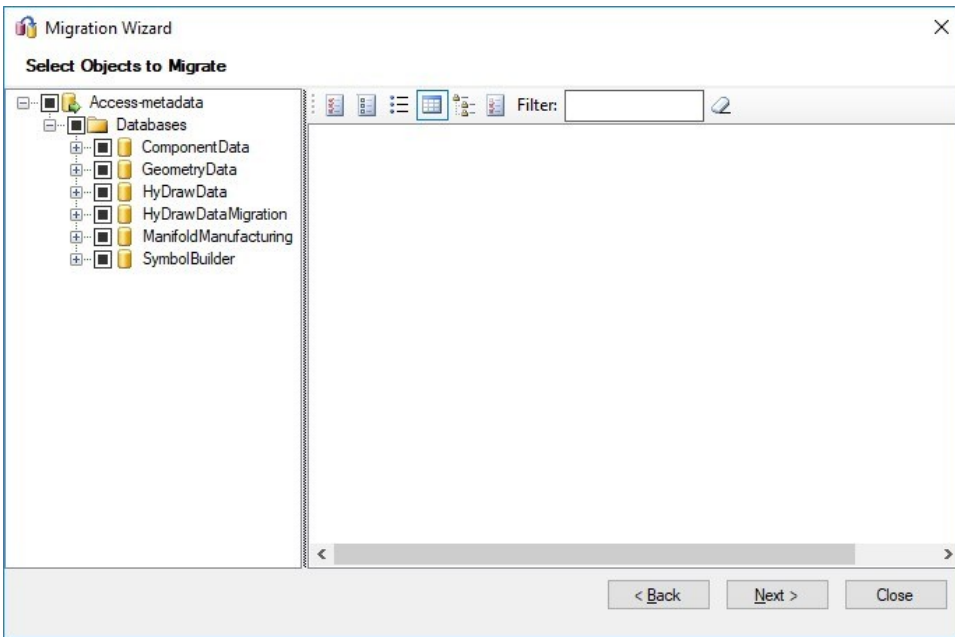
- Click **Open**.

The Migration Wizard: Add Access Databases dialog box displays.



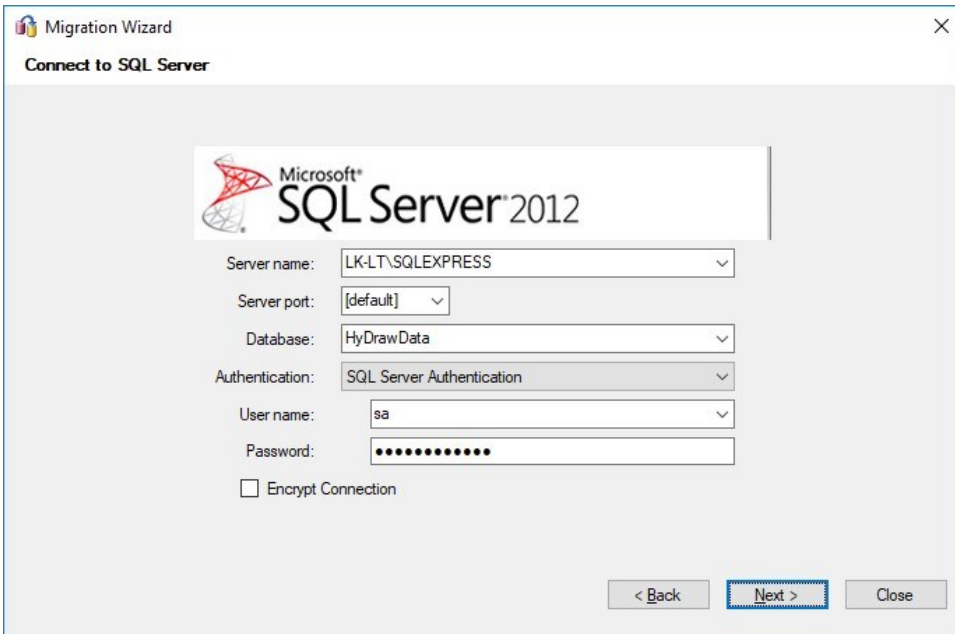
- Click **Next**.

The Migration Wizard: Select Objects to Migrate dialog box displays.



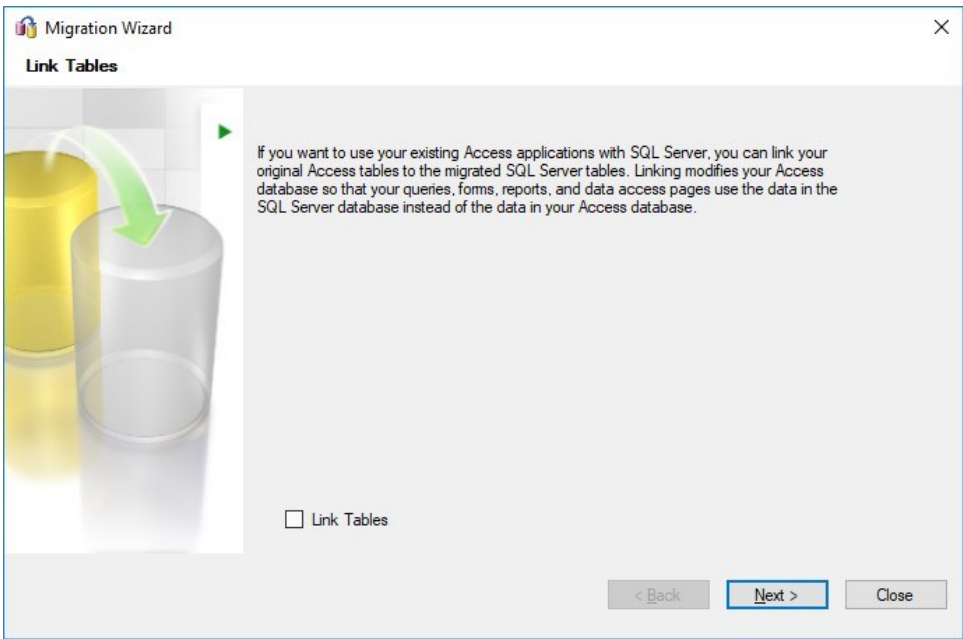
11. Click **Next**.

The Migrate Wizard: Connect to SQL Server dialog box displays.



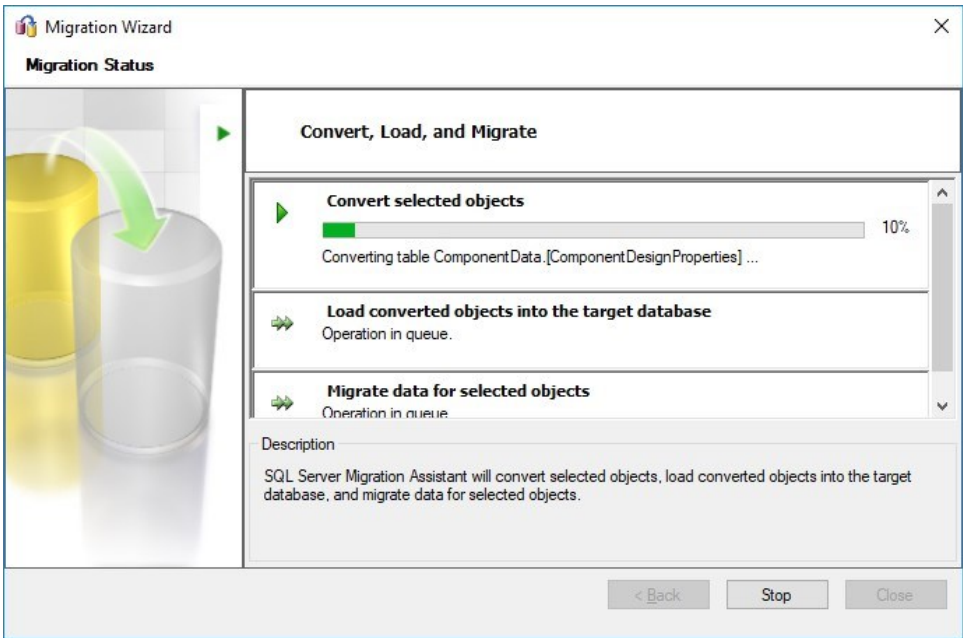
12. Enter the **Server Name**, select **Database** HyDrawData from the dropdown.
13. Enter **Authentication**, **User name**, **Password** and click **Next**.

The Migration Wizard: Link Tables dialog box displays.

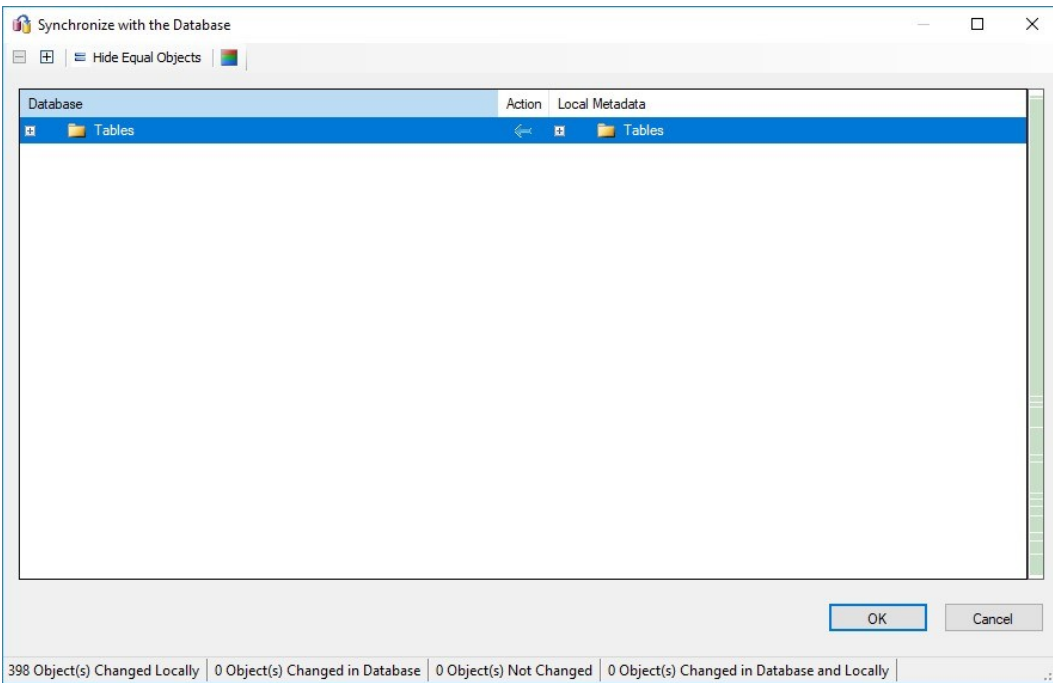


14. Click **Next**.

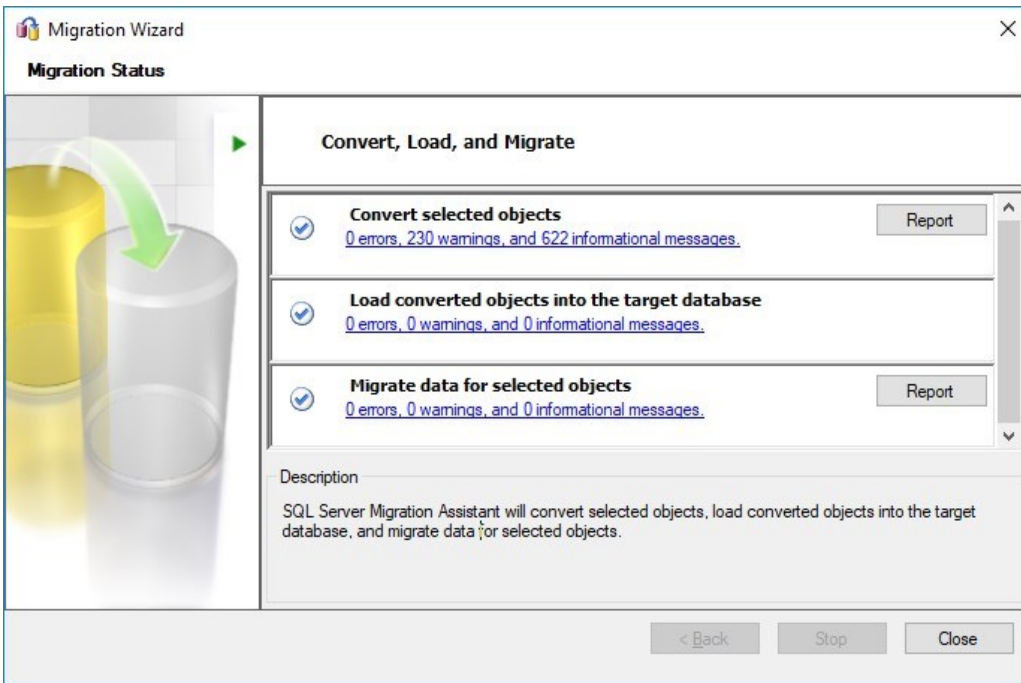
The Migration Wizard: Migration Status dialog box displays.



The Synchronize with the Database dialog box displays.



15. Click **OK**.

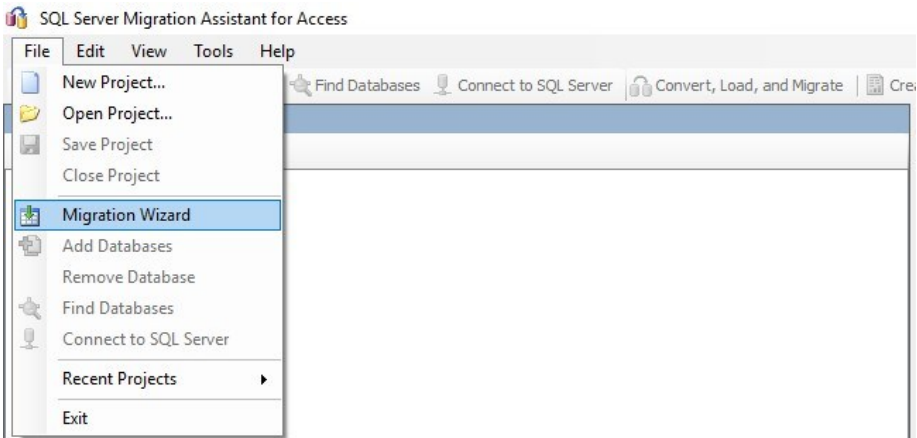


16. When the migration is complete,
If you get **"0 Errors"**, you can **Close** the dialog box.

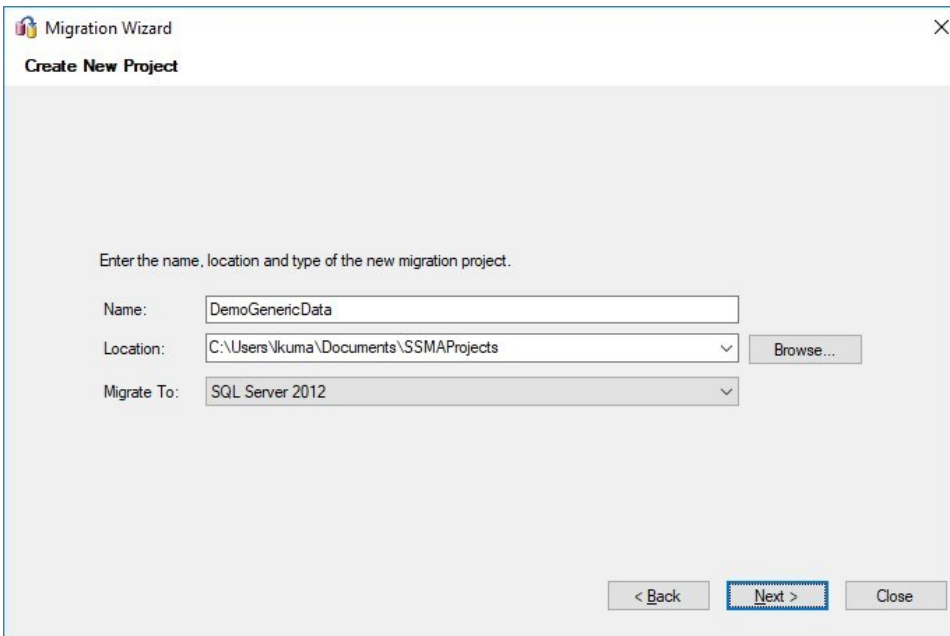
If you get any Errors, Contact VEST Support at support@vestusa.com. Ignore warnings and information messages.

Migrate Symbol Data

1. Click **File** and select **Migration Wizard**.

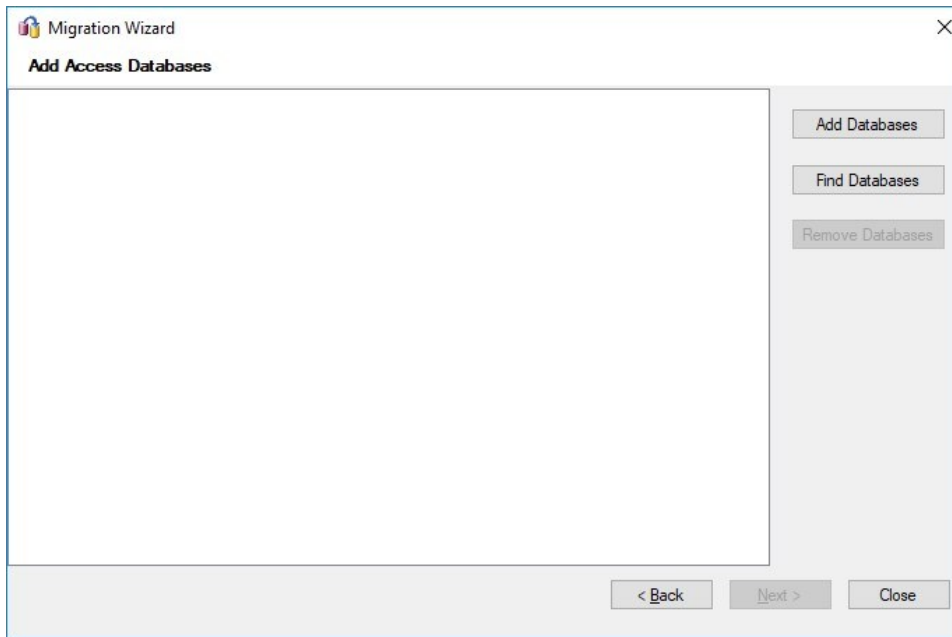


The Migration Wizard: Create New Project dialog box displays.



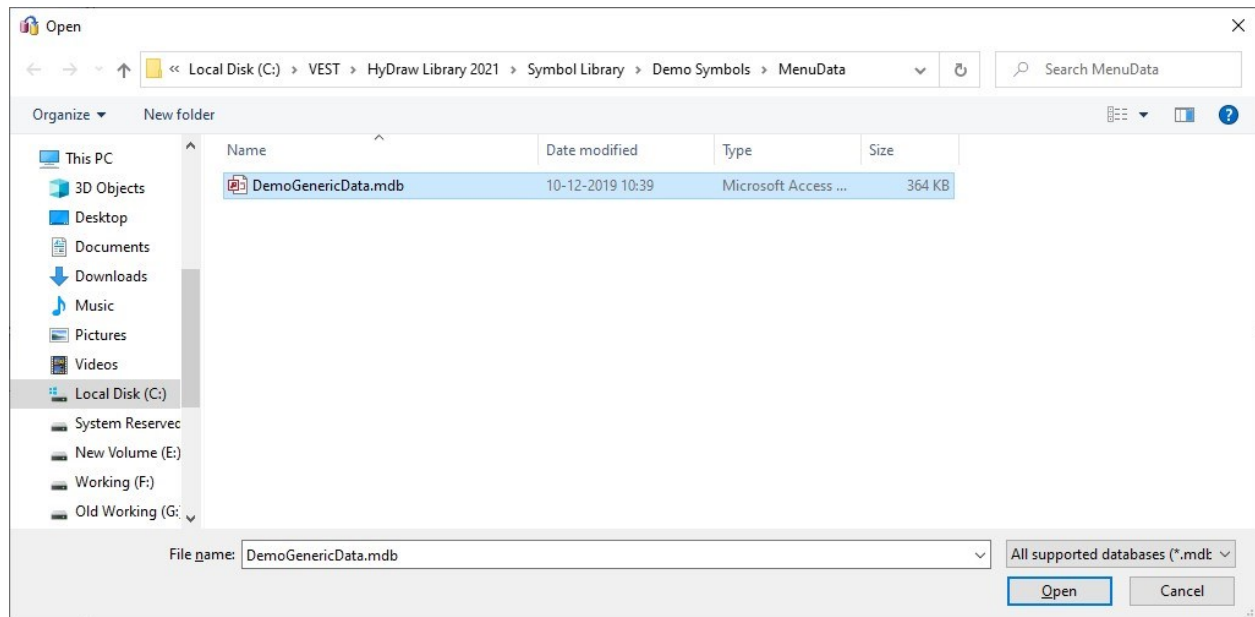
2. Enter **Name**, "DemoGenericData".
3. Browse and specify the **Location**, if you require to change the default path.
4. Select **Migrate To**, SQL version.

The Migration Wizard: Add Access Databases dialog box displays.



5. Click **Add Databases**.

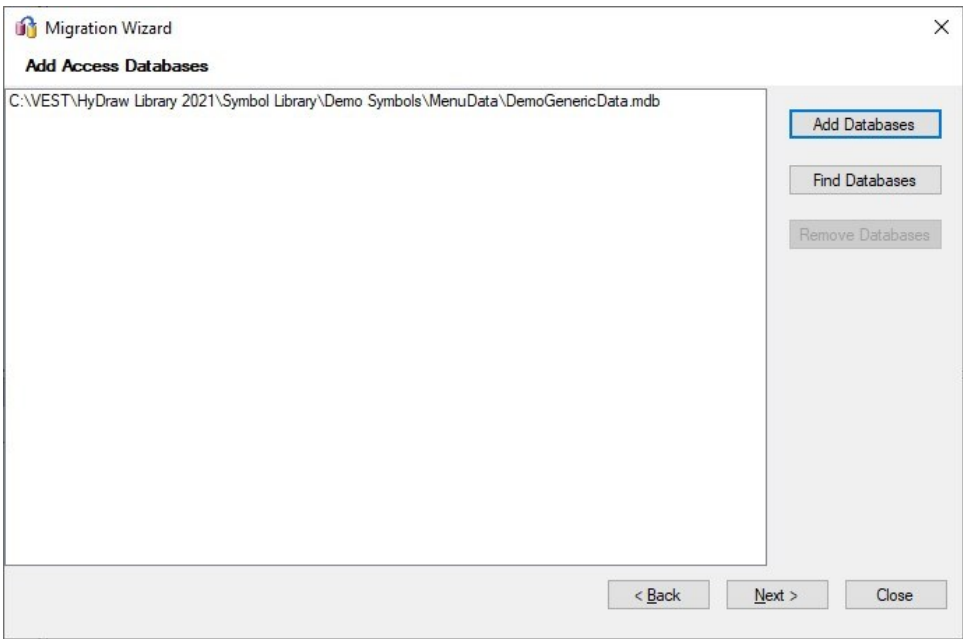
The Open dialog box displays.



6. Browse to the HyDraw Library, "Symbol Library/Demo Symbols/Menu Data" folder and select **DemoGenericData.mdb**.

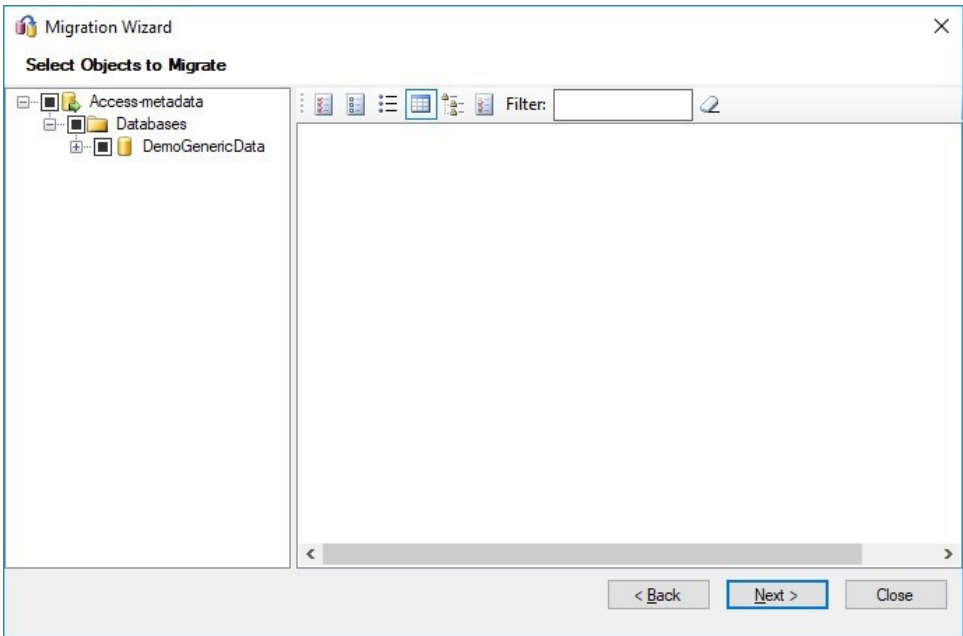
7. Click **Open**.

The Migration Wizard: Add Access Databases dialog box displays.



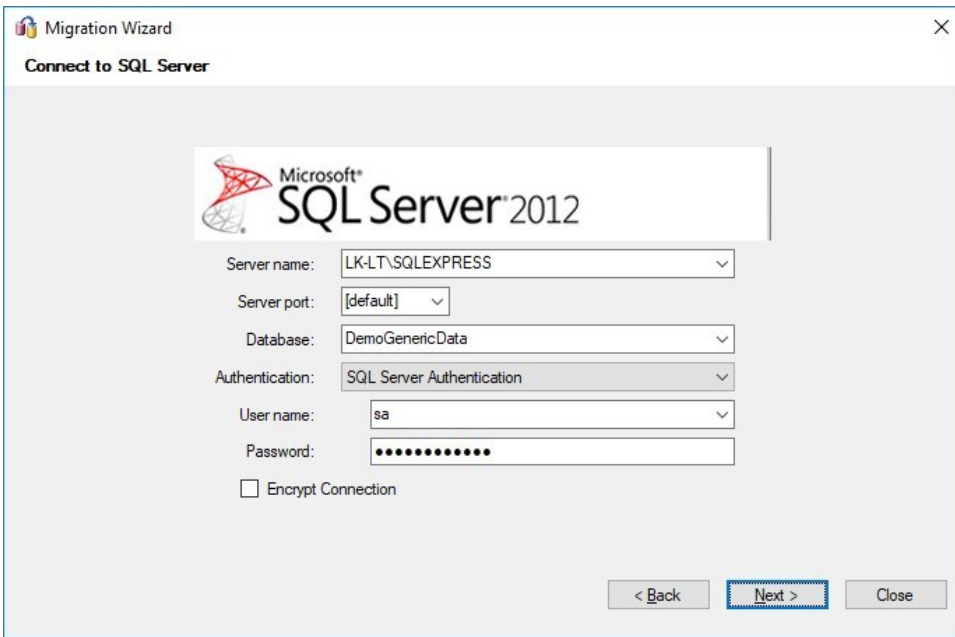
8. Click **Next**.

The Migration Wizard: Select Objects to Migrate dialog box displays.



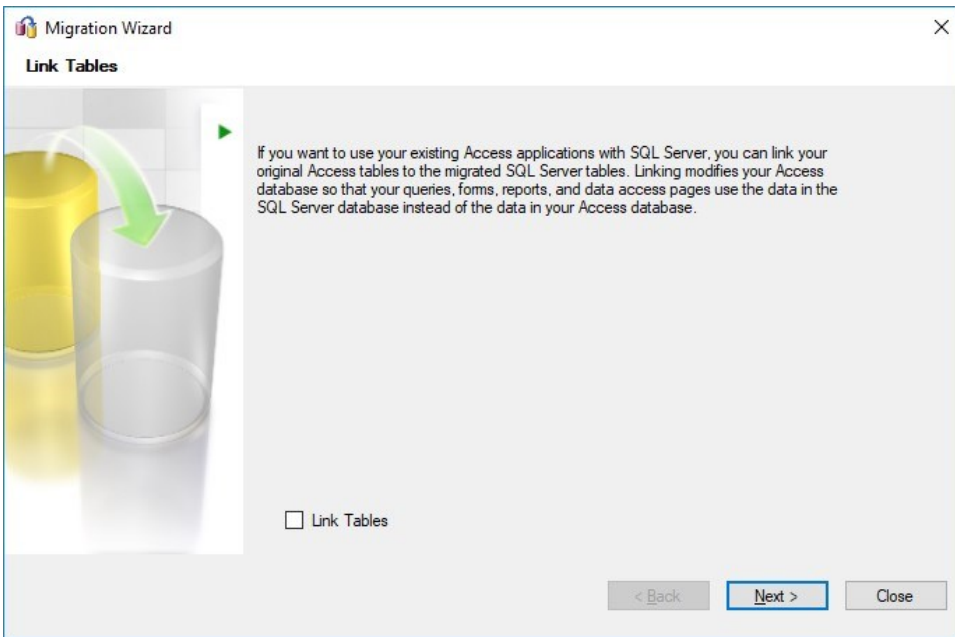
9. Click **Next**.

The Migrate Wizard: Connect to SQL Server dialog box displays.



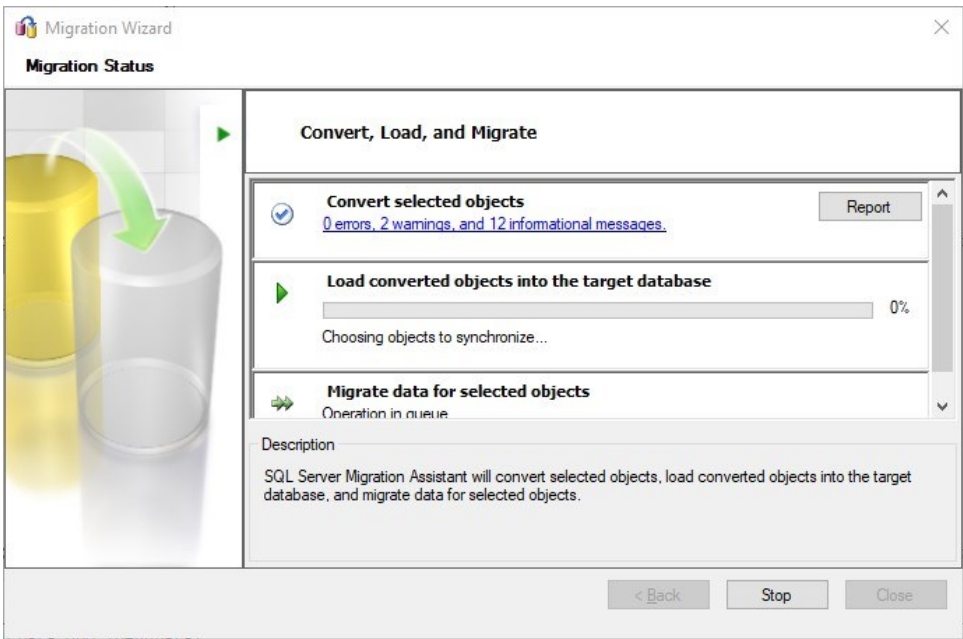
10. Enter the **Server Name**, select **Database** DemoGenericData from the dropdown.,
11. Enter **Authentication**, **User name**, **Password** and click **Next**.

The Migration Wizard: Link Tables dialog box displays.

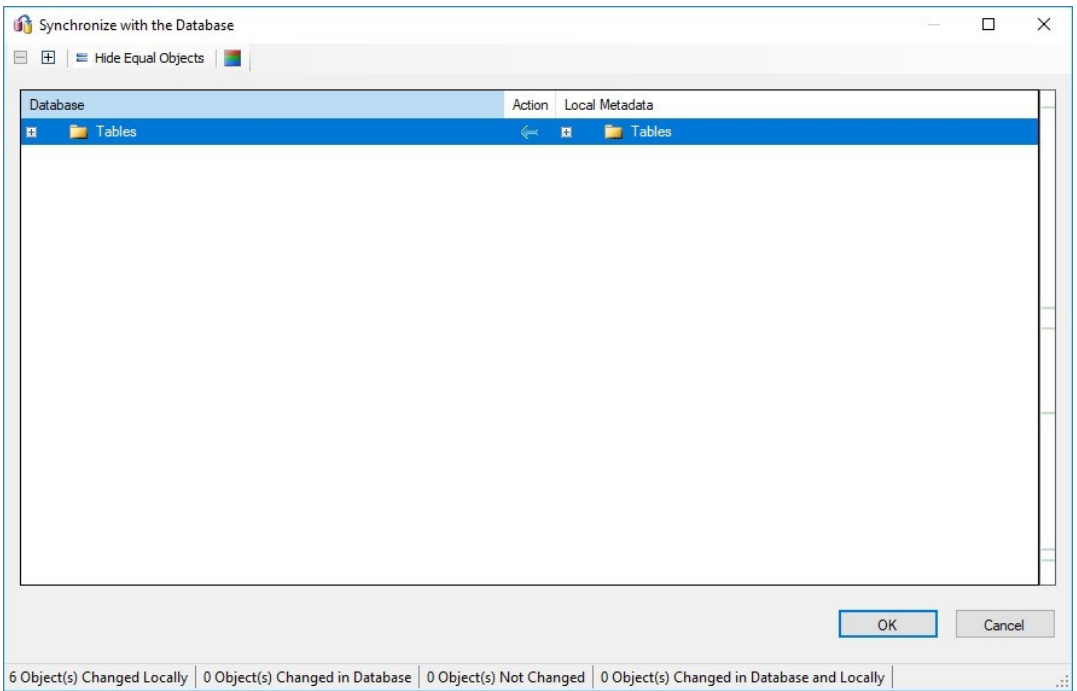


12. Click **Next**.

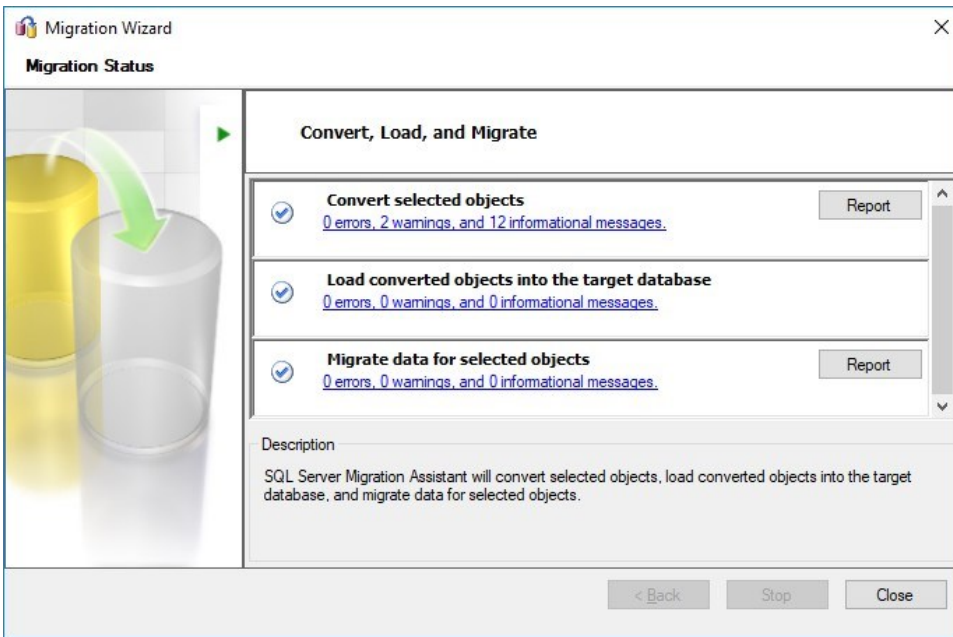
The Migration Wizard: Migration Status dialog box displays.



The Synchronize with the Database dialog box displays.



13. Click **OK**.



14. When the migration is complete,
 - If you get “**0 Errors**”, you can **Close** the dialog box.
 - If you get any Errors, Contact VEST Support at support@vestusa.com. Ignore warnings and informational messages.
15. Repeat the above steps for all the Symbols libraries, i.e. ElectricalGenericData.mdb, HydraulicGenericData.mdb, PneumaticGenericData.mdb and any Custom Libraries you have created or any Custom Libraries provided by VEST or Child Libraries created in HyDraw.

Migrate Subsystem Data

Repeat the steps 1 to 15, per Chapter 2. Symbol Data Migration.

Ensure the database name used is **SubsystemData** available at default location, “C:\VEST\HyDraw Library 2022\Subsystems\MenuData”.