

HyDraw® CAD 2024

What's New

The screenshot displays the HyDraw CAD 2024 software interface. The main workspace shows a hydraulic circuit diagram with various components like valves, pumps, and cylinders. A 'PLC CONTROLLED' label is visible. The interface includes a menu bar at the top with options like Circuit, System, Services, Drafting, Insert, Annotate, Parametric, View, Manage, Output, Collaborate, Help, and Vault. Below the menu bar is a ribbon with icons for Log In, Log Out, Open, Refresh, Check In, Check Out, Undo, Check Out, Change Category, Change State, Get Revision, Revise Revision Table, Vault Options, Help, and About. The left sidebar contains the 'HYDRAW LIBRARY EXPLORER' with a search bar and a list of hydraulic symbols such as Pump, Directional Control Valve, Check and Shuttle Valve, Flow Control and Shut Off Valve, Pressure Control Valve, Logic Element, Stackable Valve, Stackable Valve - Flipped, Flange Valve, Proportional Valve, Servo Valve, Slip-In Cartridge Valve, Screw-In Cartridge Valve, Filter and Strainer, Hydraulic Motor and Rotary Actuator, Cylinder, Intensifier, Manifold and Subplate, Manifold and Subplate - Flipped, Gauge, Switch and Measuring Device, Accumulator, Heat Exchanger, Electric Motor, Hoses and Connectors, Reservoir and Power Unit components, Miscellaneous, and Mobile Valves. The right sidebar shows the 'HYDRAW PROPERTY MANAGER' with a table of items and a list of accessories, documents, and CAD files.

ITEM ID	QUANTITY	MODEL CODE	DESCRIPTION
2	1	03ACE**	COUNTERBALANCE VALVE
9	1	4WE6D6X/E**	DIRECTION CONTROL VALVE
10	1	ZW-2SR06-01- AAB-30	FLOW CONTROL VALVE
17	1	3DRE10P-7X*XYG24*	PRESSURE REDUCING VALVE

Backup Oil Supply

ITEM ID	MODEL CODE	QUANTITY	COST	DESCRIPTION
---------	------------	----------	------	-------------

HyDraw® CAD 2024 What's New

Vault

Access Panel

Log In/Log Out

Open

Go To Workspace

File Status Panel

Refresh

Check In/Check Out

Control Panel

Change Category

Change State

Revision Commands

Vault Options

Options

Revision Table Mapping

Content and Filters

HyDraw® CAD

Licensing

Cloud Network License

Export to XML

Export Parts List to XML

Export HLM Data to XML

AutoCAD OEM What's New

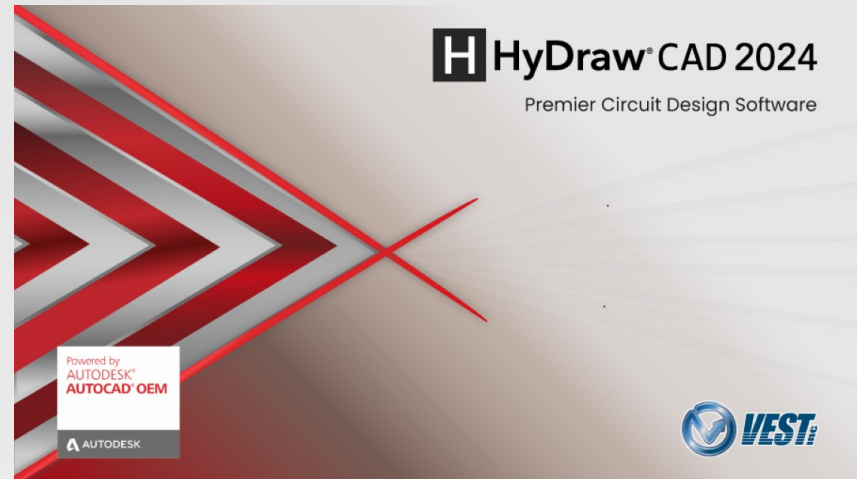
AutoCAD 2023 New Features

AutoCAD 2024 New Features



Vault Introduction

Since HyDraw CAD is built on the AutoCAD OEM Engine, AutoDesk Vault integration is not included. With the new HyDraw CAD Vault Interface, this direct integration is now achievable.



Pre-Requisites required for using the HyDraw CAD Vault Interface include:

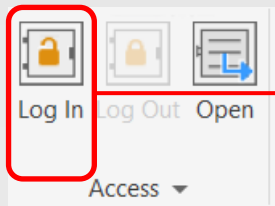
- AutoDesk Vault Professional 2023 Client installed on the same system as HyDraw CAD.
- AutoDesk Vault Professional 2023 Server installed on the server hosting the Vault Server application.
- An active AutoDesk Vault license.

Access Panel

Accessing Vault within HyDraw® CAD

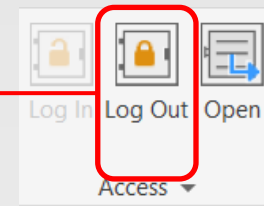
Log In/Log Out

Log In and Out of Vault directly from within HyDraw CAD



Log In to AutoDesk
Vault directly within
HyDraw CAD

Log Out of AutoDesk
Vault within HyDraw
CAD



Select Log In Authentication
method

Authentication	Vault Account
User Name	Vault
Password	*****
Server	
Vault	Valut2023

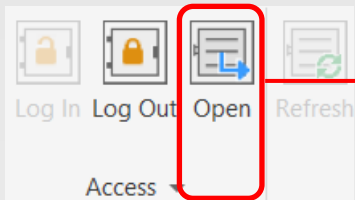
Select Vault Instance

Enter Vault server credentials

Note: Only AutoDesk Vault 2023 is supported by HyDraw CAD 2024.

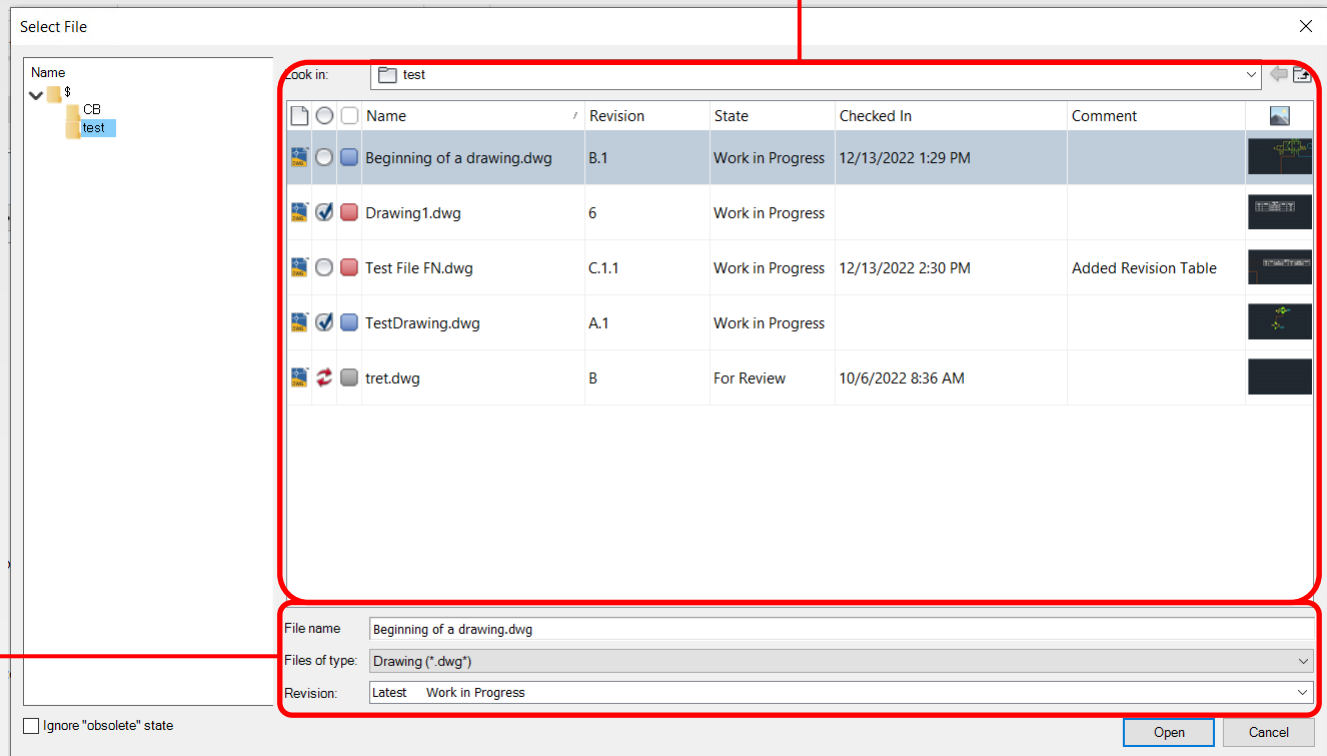
Open

Open files stored within Vault directly in HyDraw CAD



Directly open Vault files within HyDraw CAD

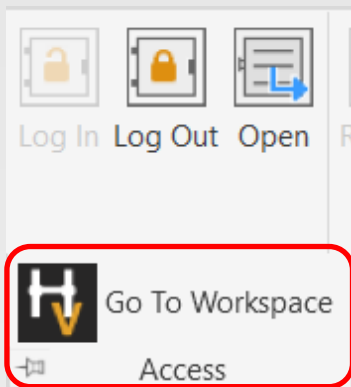
Quickly view the status of files within Vault



Edit the details of the selected file prior to opening

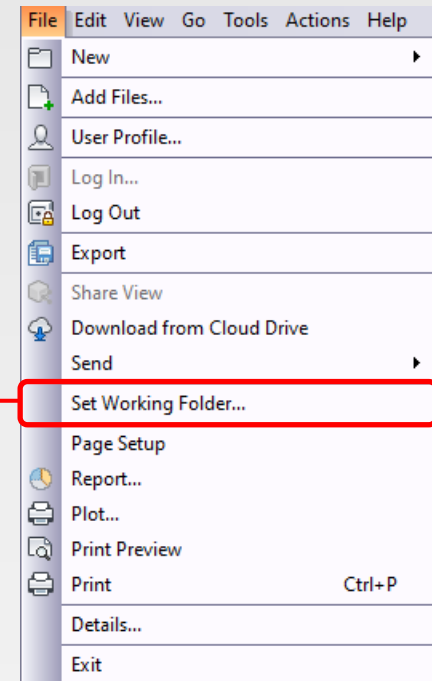
Go To Workspace

View the Working Folder



View the Working Folder containing local copies of Vault files

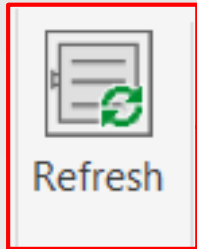
The Working Folder can be set in Vault Client application



File Status Panel

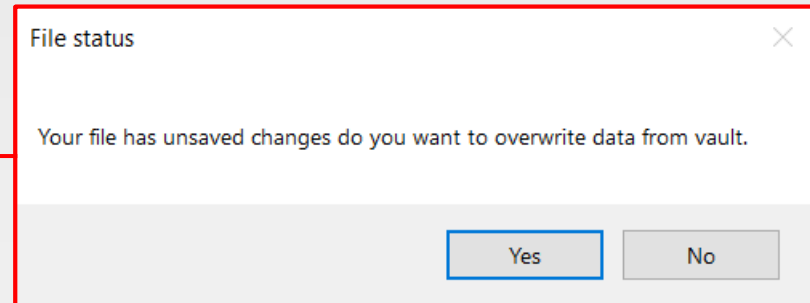
Manipulate File Status directly from within HyDraw[®] CAD

Refresh the Local File directly within HyDraw CAD



Refresh the file stored within the local working file with the file currently in Vault

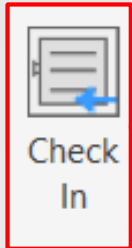
Any changes made to the local drawing will be overwritten by the Vault drawing



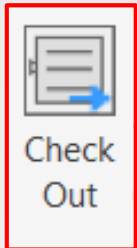
Note: Any open file in the local working folder will be updated with the correct version of the leading revision currently stored in the specified Vault.

Check In/Check Out

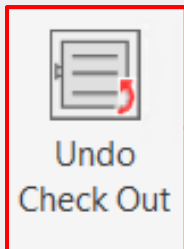
Check In and Check Out files from Vault



Check in the opened file and replace the latest version of the file within Vault



Check out the currently opened file to make edits on the Vault server version of the file



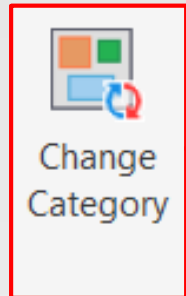
Retract the check out of a file and return the file to Vault with no changes

Control Panel

Control File Workflows directly within HyDraw[®] CAD

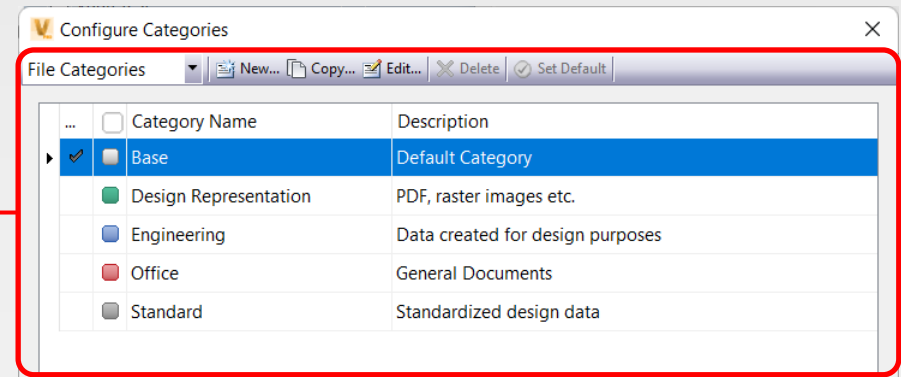
Change Category

Change File Categories directly within HyDraw CAD



Change the category of the currently open file from directly within HyDraw CAD

Categories are defined within Vault Client application and utilized within HyDraw CAD



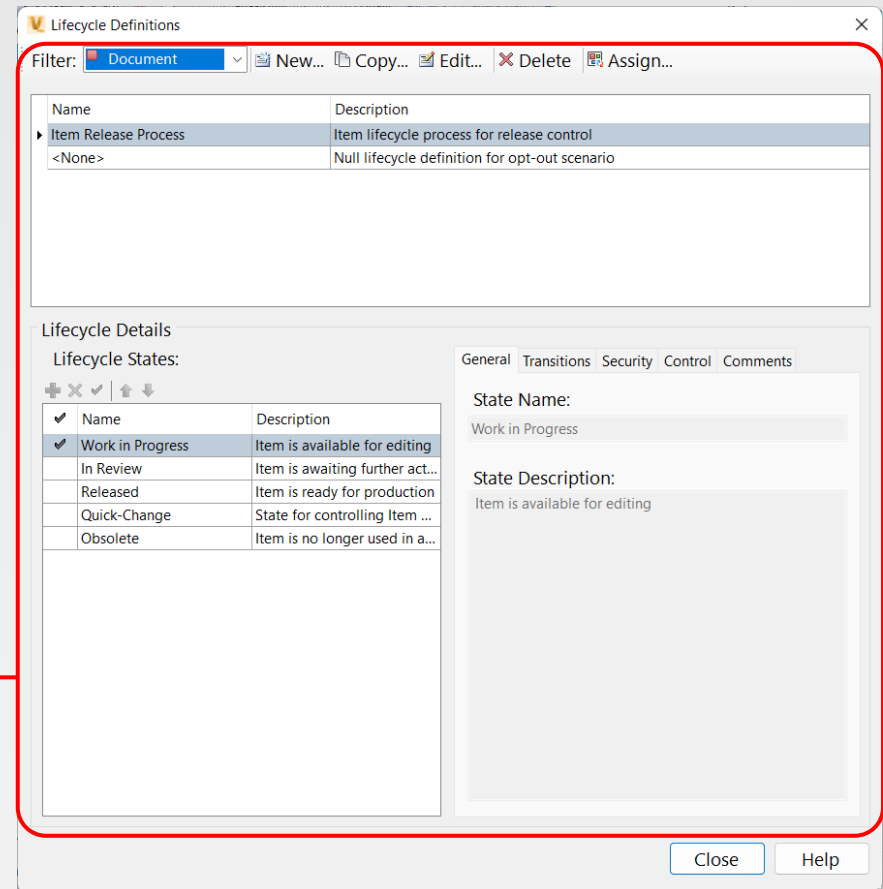
Change State

Change File State directly within HyDraw CAD

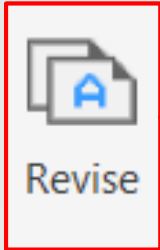


Change the state of the currently open file directly within HyDraw CAD

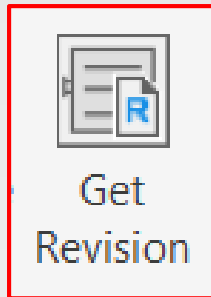
Lifecycles and states are defined within Vault Client application and used within HyDraw CAD



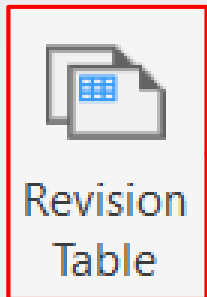
Revision Commands



Create a revision of the current file. Define the revision type and add any comments regarding the revision.



Open a previous revision of the currently open file from Vault.



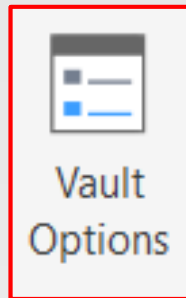
Insert a revision table into the currently checked out file. The revision table format is defined within the Options command within the Vault tab.

Note: Revision Schemes are defined within the Vault Client Application and used within HyDraw CAD

Options

HyDraw CAD Vault Options

Options



Open the options dialog for HyDraw CAD Vault options

Store login information to automatically login to Vault upon opening HyDraw CAD

Vault Options

Automatic login next session

Enable Revision Table control

Regulate Revision Table formatting by disabling editing capabilities

Revision Table Mapping

Toggle bias control to display whether only properties in a released revision are displayed. For more information on bias control, see [here](#).

The screenshot shows the 'Mappings' dialog box with the 'Content' tab selected. The main area is titled 'Match the revision table column information to Vault properties'. It contains a table with the following columns: 'Column Header', 'Vault Properties', and a column of checkboxes. The 'Revision' row is selected. To the right of the table are three buttons: a plus sign in a square (Add a new row), a red X in a square (Delete the selected row), and two arrows (Move the selected row up or down). At the bottom, there is a 'Title' field containing 'Revision History' and 'OK' and 'Cancel' buttons.

Column Header	Vault Properties	
Revision	Revision	<input checked="" type="checkbox"/>
Description	Comments	<input type="checkbox"/>
Date	Checked In	<input type="checkbox"/>
Approved	Engr Approved By	<input type="checkbox"/>
DWG Version	DWG Type	<input type="checkbox"/>

Annotations:

- Map file properties from Vault (points to the 'Vault Properties' column)
- Add a new row (points to the plus button)
- Delete the selected row (points to the red X button)
- Move the selected row up or down (points to the arrow buttons)
- Set the title for the Revision Table (points to the 'Title' field)

Content and Filters

Mappings Content Filters

Configure the type of information to be displayed within the revision table

Populate information using Version

From the Released state information

Limit number of rows

Decide which revision data should be included within the revision table

Limit the number of revision table rows to save space in the drawing

Include or exclude certain revisions and revision levels within the revision table

Mappings Content Filters

Set up filters to omit information in the revision table

Display revision at the following levels

Primary Secondary Tertiary

Apply precedence rules to display only

Lower Revision levels

Higher Revision levels

Omit the initial revision row

Licensing

Cloud Network Licensing now available

Cloud Network License

HyDraw CAD 2024 License Manager

Product name: HyDraw CAD 2024 R

Build number: 2024.0.0.6

License type: Cloud License

License status: Active

Cloud License Server Instance ID: [REDACTED]

Expiration Date: 10/13/24

No. of License: 3

License in Use: 1

License Borrowing: Borrow until 24 October, 2023

Buttons: License Agreement, Change License, Close

Easily utilize a floating license anywhere without the need to host the licenses on a local server

Borrow a license for when an internet connection isn't available

Note: An internet connection is required to utilize a cloud network license.

Export to XML

Quickly export model data to an XML file

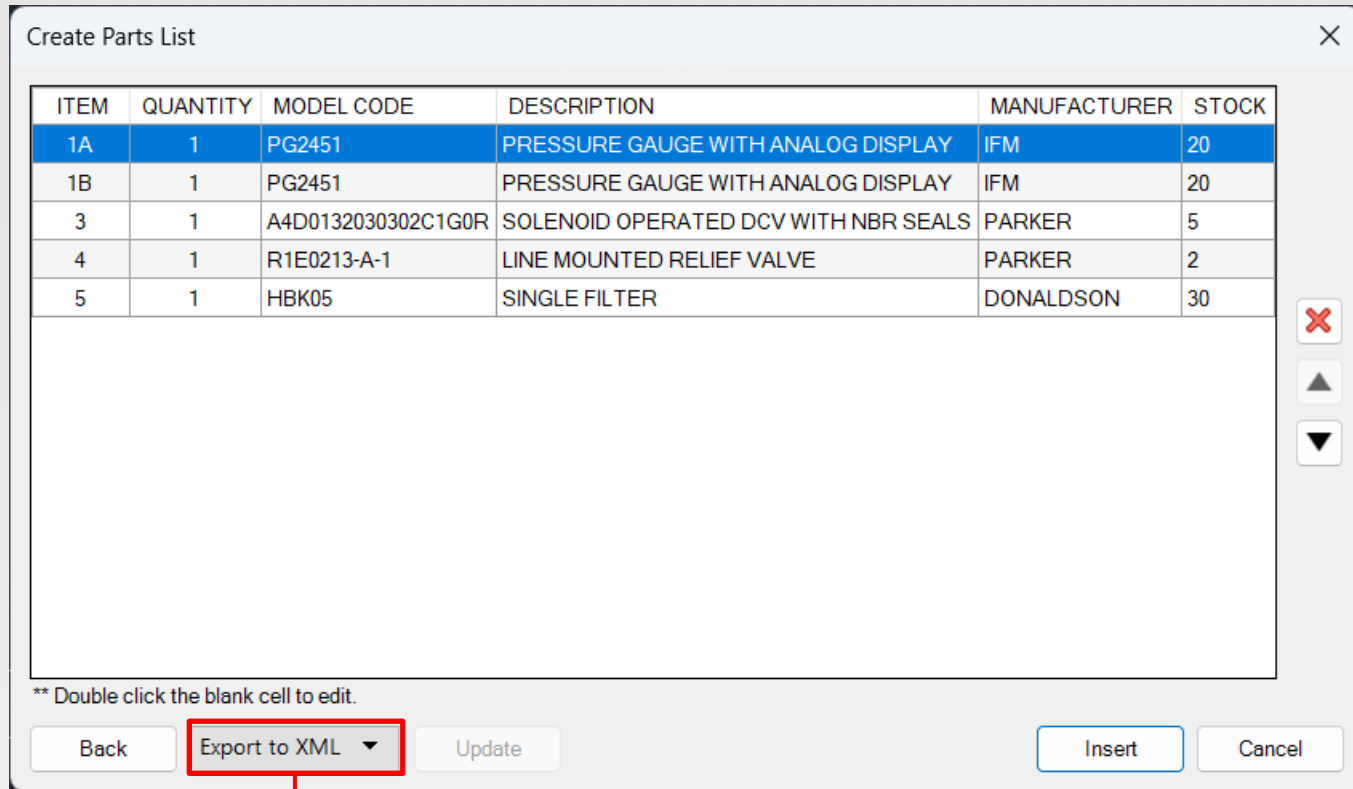
Export Parts List to XML

Create Parts List ✕

ITEM	QUANTITY	MODEL CODE	DESCRIPTION	MANUFACTURER	STOCK
1A	1	PG2451	PRESSURE GAUGE WITH ANALOG DISPLAY	IFM	20
1B	1	PG2451	PRESSURE GAUGE WITH ANALOG DISPLAY	IFM	20
3	1	A4D0132030302C1G0R	SOLENOID OPERATED DCV WITH NBR SEALS	PARKER	5
4	1	R1E0213-A-1	LINE MOUNTED RELIEF VALVE	PARKER	2
5	1	HBK05	SINGLE FILTER	DONALDSON	30

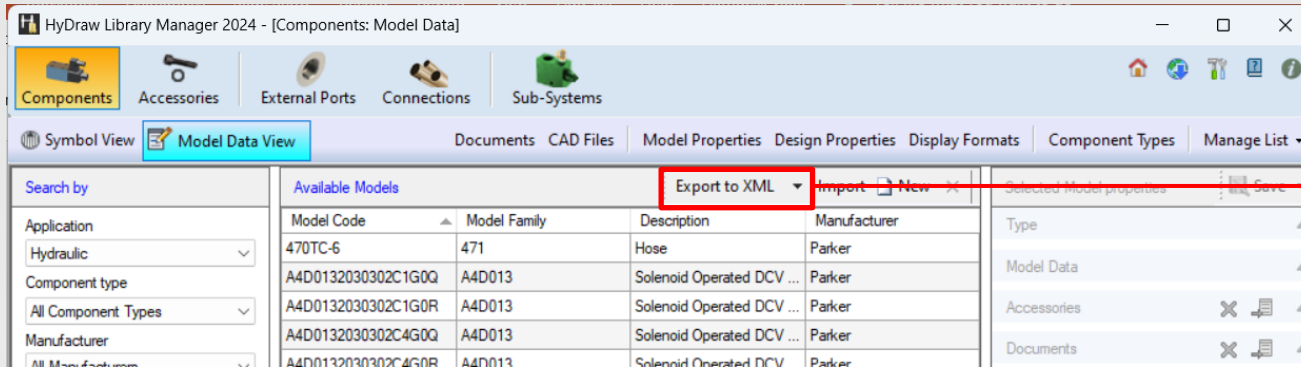
** Double click the blank cell to edit.

Back **Export to XML** Update Insert Cancel

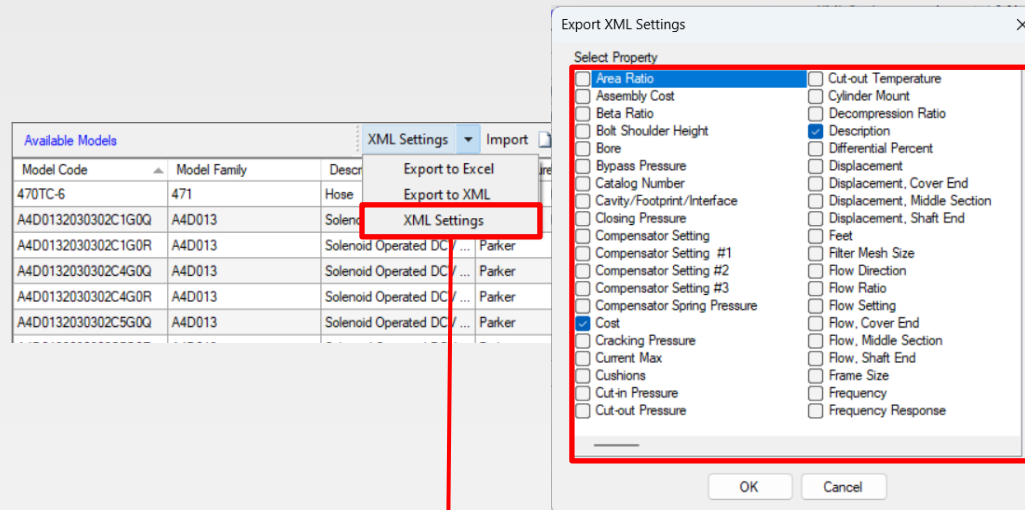


Export parts list information to an XML file. Easily import that XML file to your ERP system to update information

Export HLM Data to XML



Export component data from the HyDraw Library Manager to an XML file. This file can then easily be imported into your company's ERP system

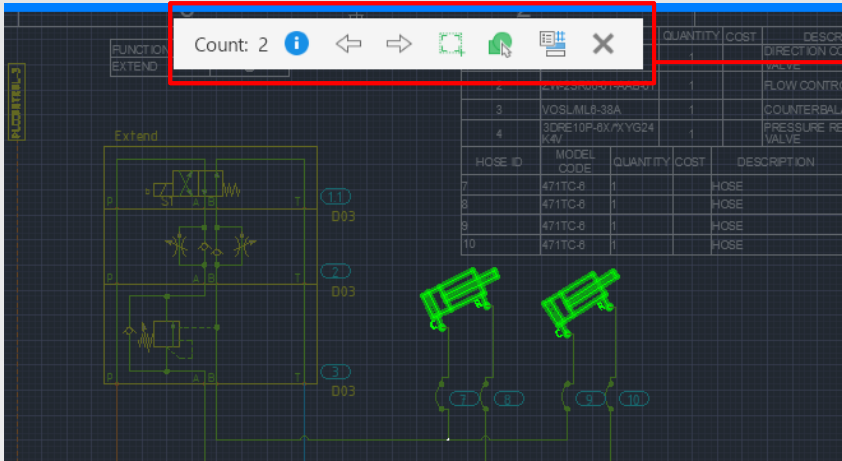


Identify the custom properties exported with each model to be included within the XML format

AutoCAD OEM What's New

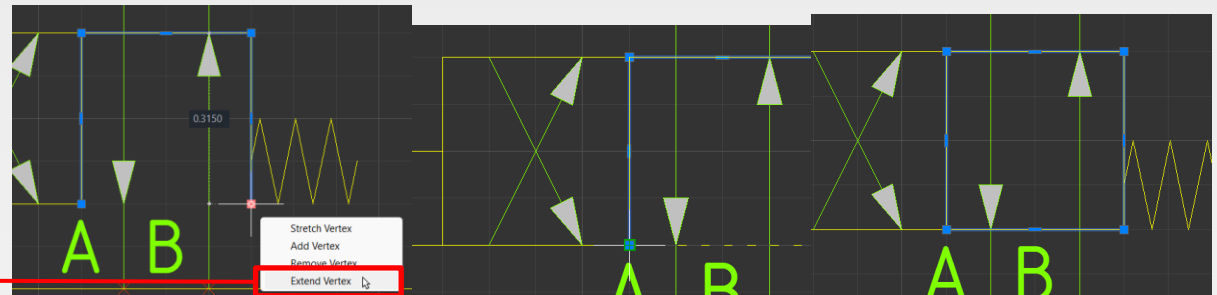
New Features included in the latest AutoCAD OEM Engine

AutoCAD 2023 New Features



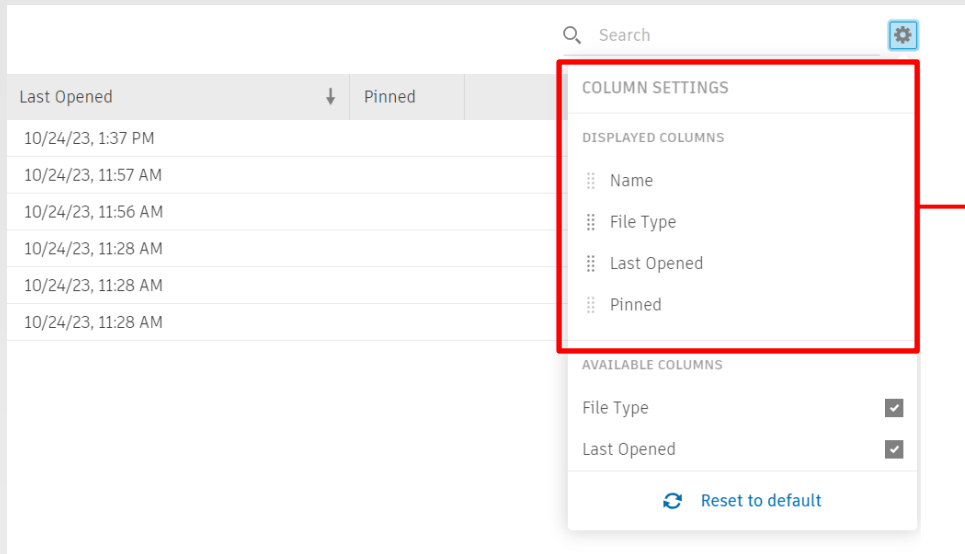
Count: Easily get a count of blocks or objects throughout the drawing using the new Count feature.

Quickly resume where you left off with the new **Extend Vertex** command for Polylines



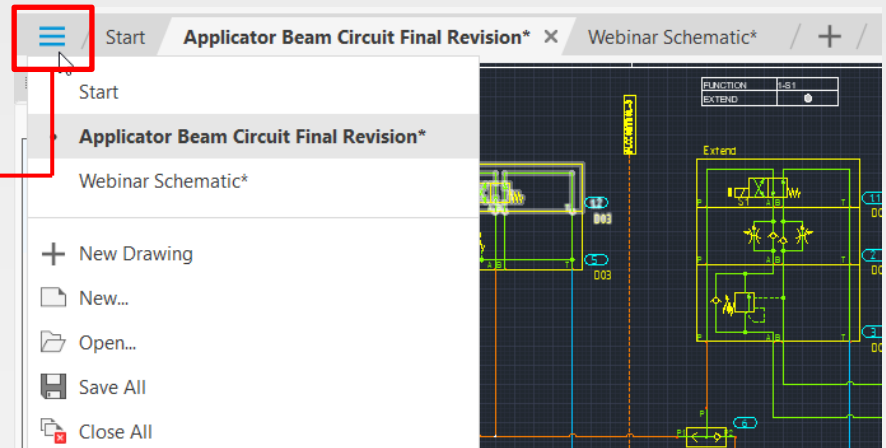
For the full list of What's New features in AutoCAD OEM 2023, navigate the What's New located here: [AutoCAD 2023 Help | What's New in AutoCAD 2023 | Autodesk](#)

AutoCAD 2024 New Features



Easily rearrange and remove displayed columns within the list view as well as many other **Start Tab Updates**

Easily switch between drawings, close all drawings, open or start a new drawing, or save all open drawings using the new **File Tab Menu**



For the full list of What's New features in AutoCAD OEM 2023, navigate the What's New located here: [AutoCAD 2024 Help](#) | [What's New in AutoCAD 2024](#) | [Autodesk](#)

HyDraw® CAD 2024

The Hydraulic Industry's Leading Circuit Design Software

USA: +1 (248) 649-9550 sales@VESTusa.com
Europe: +39 328 695 7001 carlo.molon@VESTusa.com

